

**\$59.50**

# **ELECTRICIAN'S EXAM PREPARATION GUIDE**

*Ninth Edition*

Based on the 2014 *NEC*®

by

**John E. Traister**

Revised and Updated by

**Dale C. Brickner**

**Includes inside the back cover:**



Inside the back cover of this book you'll find a software download certificate. To access the download, follow the instructions printed there.

- Contains all the questions in the book in interactive self-test software that makes studying almost fun.
- Each answer is explained, and shows the pertinent *NEC*® section at the click of the mouse.
- Use the study mode to get an immediate response on each answer.
- Use the exam mode for a timed exam — just like the real one, and see your grade when finished.



**Craftsman Book Company**

6058 Corte del Cedro, Carlsbad, CA 92011

# Acknowledgments

---

I am indebted to several individuals and organizations who helped in the preparation of this book. One group is the electrical examining boards throughout the United States. A list of these organizations appears in Appendix I of this book. The following were especially helpful in furnishing reference materials or else helping with the production.

*National Fire Protection Association® (NFPA®)*

*C. Keeler Chapman, Artwork*

*Nicole L. Brickner, Typist and Organizer*

*Joe A. Fintz, Final Exam Verification*

*Ron Murray, Code Consultant*

*Floyd Richards, Question Verification & Code Consultant*

Portions of this publication are reprinted with permission from *NFPA 70®-2014 National Electrical Code®*, Copyright © 2013 National Fire Protection Association, Quincy, MA 02169. This reprinted material is not the complete and official position of the National Fire Protection Association on the referenced subject, which is represented only by the standard in its entirety.

*National Electrical Code®* and *NEC®* are registered trademarks of the National Fire Protection Association, Inc., Quincy, MA 02169.

## Looking for other construction reference manuals?

Craftsman has the books to fill your needs. **Call toll-free 1-800-829-8123** or write to Craftsman Book Company, 6058 Corte del Cedro, Carlsbad, CA 92011 for a **FREE CATALOG** of over 100 books, including how-to manuals, annual cost books, and estimating software. Visit our Web site: [www.craftsman-book.com](http://www.craftsman-book.com)



## Find FREE Legal Contracts for Most States

[www.construction-contract.net](http://www.construction-contract.net)

### Library of Congress Cataloging-in-Publication Data

Traister, John E.

Electrician's exam preparation guide : based on the 2014 NEC / by John E. Traister, revised and updated by Dale C. Brickner. -- Ninth edition.

pages cm

Includes bibliographical references and index.

ISBN 978-1-57218-303-2 (alk. paper)

1. Electrical engineering--Examinations, questions, etc. 2. Electrical engineering--Examinations--Study guides. 3. Electricians--Licenses--United States. 4. National Fire Protection Association. National Electrical Code (2014) I. Brickner, Dale C. II. Title.

TK169.T73 2014

621.319'24076--dc23

2014002984

# Contents

---

<b>Introduction</b>	.....	<b>5</b>
<b>Chapter 1</b>	<b>Electrical Systems — General Requirements</b> .....	<b>13</b>
<b>Chapter 2</b>	<b>Electrical Calculations</b> .....	<b>37</b>
<b>Chapter 3</b>	<b>Branch Circuits and Feeders</b> .....	<b>59</b>
<b>Chapter 4</b>	<b>Electric Services</b> .....	<b>89</b>
<b>Chapter 5</b>	<b>Distribution Equipment</b> .....	<b>117</b>
<b>Chapter 6</b>	<b>Overcurrent Protection</b> .....	<b>137</b>
<b>Chapter 7</b>	<b>Utilization Equipment</b> .....	<b>163</b>
<b>Chapter 8</b>	<b>Measuring and Testing</b> .....	<b>183</b>
<b>Chapter 9</b>	<b>Electric Motors and Motor Controls</b> .....	<b>203</b>
<b>Chapter 10</b>	<b>Special Occupancies</b> .....	<b>223</b>
<b>Chapter 11</b>	<b>Miscellaneous Applications</b> .....	<b>245</b>
<b>Chapter 12</b>	<b>Transformers and Capacitors</b> .....	<b>257</b>
<b>Chapter 13</b>	<b>Electrical Drawings</b> .....	<b>269</b>
<b>Final Examination</b>	.....	<b>289</b>
<b>Using the Interactive Study Center Download</b>	.....	<b>340</b>
<b>Appendix I</b>	<b>State Contractor’s Examination Offices</b> .....	<b>342</b>
<b>Appendix II</b>	<b>Answers to Final Exam Questions</b> .....	<b>345</b>
<b>Index</b>	.....	<b>346</b>

This page intentionally left blank

# Introduction — How to Use This Book

---

If you have been installing electrical systems for some time as an apprentice, helper, or unlicensed electrician, this book is for you. The information between the covers of this book will cover every subject that is likely to appear on most electrician's exams — either state or local.

If you are just starting your career as an apprentice electrician, this book is also for you. It begins at the beginning. You will have no trouble understanding what is explained here. Read each page carefully and you will soon earn the recognition that licensed professionals are entitled to in our present society. The financial rewards are another factor which will make your efforts worthwhile.

In most communities, any electrician working *without supervision* must be licensed. For larger electrical construction projects, many states now require the certification of journeyman electricians as well as specialty electricians, such as splicers of high-voltage cable. This trend is certain to continue as legislatures recognize the need to protect the public from incompetents. The state of Virginia, for example, is now requiring all persons doing electrical work to be licensed.

Most licensing authorities prepare demanding exams that are a good test of the examinee's knowledge. These exams help to guarantee that electrical systems installed in building construction will meet minimum standards for protecting the lives and health of building occupants (and the buildings themselves) for many years to come. This also helps to keep insurance rates to a minimum.

Begin your study for any electrician's exam with two points in mind:

- Take the exam seriously
- Every minute spent studying this book increases your chances of passing the exam

You can pass any electrician's exam, but only if you study carefully each of the questions in this book. What you learn from studying is the foundation on which your professional career will be built.

Understand also that the licensing authority isn't the enemy. They aren't trying to keep you out of the electrical business. They only want to set some basic standards and be assured that your installations will be done in a workmanlike manner and in accordance with the latest edition of the *National Electrical Code*® (*NEC*®). The public should be assured that all licensed electricians are knowledgeable professionals. That's good for society in general, and it's good for all professional electricians and electrical contractors who live and work in your area.

Unfortunately, there are too many applicants who are not well prepared when they sit down to take the electrician's exam. Taking an electrician's exam without doing a good job of preparation is a complete waste of time — both yours and that of the licensing authority. The results are predictable. Don't make that mistake.

The most common reason for failure is that the applicant didn't study properly because he didn't know how, or studied the wrong material. This book should put an end to that excuse. You have in your hands the most complete, easiest-to-use, most practical reference available for preparing to take the tests that are actually given today. Read this book carefully, examine every question, understand all the answers. Do this, and there's no way you will be unprepared on examination day. You are almost certain to score high.

All the common questions and answers are here, but just knowing the answer is not always enough. Sometimes it is just as important to understand *why* a particular answer is correct. That's why many answers include a quotation or reference



The *National Electrical Code (NEC)* has become the Bible of the electrical industry

section from the *National Electrical Code*. Sometimes you will find notes or clarifications under the answer when there is an important point you might miss.

The *National Electrical Code* is used in practically every area of the United States for inspecting electrical systems in building construction. Most of the questions appearing on electrician's exams will come directly from Articles and Sections of the latest *NEC*. Therefore a brief review of the individual *NEC* sections that apply to electrical systems is in order. Sample questions concerning all sections of the *NEC* may be found in the chapters to follow.

This book, however, is not a substitute for the *NEC*. You need a copy of the most recent edition and it should be kept handy at all times. The more you know about the code, the more you are likely to refer to it.

### **NEC Terminology**

There are two basic types of rules in the *NEC*: mandatory rules and advisory rules. Here is how to recognize the two types of rules and how they relate to all types of electrical systems.

**Mandatory rules:** All mandatory rules have the terms *shall* or *shall not* in them. The terms mean *must*. If a rule is mandatory, you *must* comply with it.

**Permissive rules:** All advisory rules have the terms *shall be permitted* or *shall not be required* in them. The terms in this case mean *recommended but not necessarily required*. If a rule is advisory, compliance is discretionary. If you want to comply with it, do so. But you don't have to if you don't want to.

Be alert to local amendments to the *NEC*. Local ordinances may amend the language of the *NEC*, changing it from *should* to *shall*. This means that you must do in that county or city what may only be recommended in some other area. The office that issues building permits will either sell you a copy of the code that's enforced in that county or tell you where the code is sold.

### **Learning the Layout of the NEC**

Begin your study of the *NEC* with Articles 100 and 110. These two articles have the basic information that will make the rest of the *NEC* easier to understand. Article 100 defines terms you will need to understand when you apply the code. Article 110 gives the general requirements for electrical installations. Read these two articles over several times until you are thoroughly familiar with all the information they contain. It's time well spent.

Once you're familiar with Articles 100 and 110, you can move on to the rest of the code. There are several key sections you will use often in servicing electrical systems. Let's discuss each of these important sections.

### **Wiring and Protection**

Chapter 2 of the *NEC* discusses wiring design and protection, the information electrical technicians need most often. It covers the use and identification of grounded conductors, branch circuits, feeders, calculations, services, overcurrent protection, grounding, bonding and surge protection. This

is essential information for *any* type of electrical system, regardless of the type.

Chapter 2 is also a “how-to” chapter. It explains how to provide proper spacing for conductor supports and how to size the proper grounding conductor or electrode. If you run into a problem related to the design or installation of a conventional electrical system, you can probably find a solution for it in this chapter.

### **Wiring Methods and Materials**

Chapter 3 has the rules on wiring methods and materials. The materials and procedures to use on a particular system depend on the type of building construction, the type of occupancy, the location of the wiring in the building, the type of atmosphere in the building or in the area surrounding the building, mechanical factors and the relative costs of different wiring methods.

The provisions of this chapter apply to all wiring installations except remote control switching (Article 725), low-energy power circuits (Article 725), signal systems (Article 725), communication systems and conductors (Article 800) when these items form an integral part of equipment such as motors and motor controllers.

There are three basic wiring methods used in most modern electrical systems. Nearly all wiring methods are a variation of one of these three basic methods:

- Sheathed cables of two or more conductors, such as NM cable and AC armored cable (Articles 320 through 340)
- Raceway wiring systems, such as rigid and EMT conduit (Articles 342 through 362)
- Busways (Article 368)

Article 310 in Chapter 3 gives a complete description of all types of electrical conductors. Electrical conductors come in a wide range of sizes and forms. Be sure to check the working drawings and specifications to see what sizes and types of conductors are required for a specific job. If conductor type and size are not specified, choose the most appropriate type and size meeting standard *NEC* requirements.

Articles 312 through 392 give rules for raceways, boxes, cabinets and raceway fittings. Outlet boxes vary in size and shape, depending on their use, the size of the raceway, the number of conductors entering the box, the type of building construction, and the atmospheric condition of the areas. Chapter 3 should answer most questions on the selection and use of these items.

The *NEC* does not describe in detail all types and sizes of outlet boxes. But manufacturers of outlet boxes have excellent catalogs showing all of their products. Collect these catalogs. They're essential to your work.

### **Equipment for General Use**

Chapter 4 of the *NEC* begins with the use and installation of flexible cords and cables, including the trade name, type, letter, wire size, number of conductors, conductor insulation, outer covering and use of each. The chapter also includes fixture wires, again giving the trade name, type, letter and other important details.

Article 404 covers the switches you will use to control electrical circuits.

Article 406 covers receptacles and convenience outlets used to connect portable equipment to electric circuits. Get the manufacturers' catalogs on these items. They will provide you with detailed descriptions of each of the wiring devices.

Article 408 covers switchboards, switchgear and panelboards, including their location, installation methods, clearances, grounding and overcurrent protection.

Article 410 on lighting fixtures is especially important. It gives installation procedures for fixtures in specific locations. For example, it covers fixtures near combustible material and fixtures in closets. The *NEC* does not describe the number of fixtures needed in a given area to provide a certain amount of illumination.

Article 430 covers electric motors, including mounting the motor and making electrical connections to it.

Articles 440 through 460 cover air conditioning and heating equipment, transformers and capacitors.

Article 480 gives most requirements related to battery-operated electrical systems. Storage batteries

are seldom thought of as part of a conventional electrical system, but they often provide standby emergency lighting service. They may also supply power to security systems that are separate from the main AC electrical system.

### **Special Occupancies**

Chapter 5 of the *NEC* covers *special occupancy* areas. These are areas where the sparks generated by electrical equipment may cause an explosion or fire. The hazard may be due to the atmosphere of the area or just the presence of a volatile material in the area. Commercial garages, aircraft hangers and service stations are typical special occupancy locations.

Articles 500 through 503 cover the different types of special occupancy atmospheres where an explosion is possible. The atmospheric groups were established to make it easy to test and approve equipment for various types of uses.

Section 501 covers the installation of explosion-proof wiring. An explosion-proof system is designed to prevent the ignition of a surrounding explosive atmosphere when arcing occurs within the electrical system.

There are three classes of special occupancy locations:

- Class I (Article 501): Areas containing flammable gases or vapors in the air. Class I areas include paint spray booths, dyeing plants where hazardous liquids are used, and gas generator rooms.
- Class II (Article 502): Areas where combustible dust is present, such as grain-handling and storage plants, dust and stock collector areas and sugar-pulverizing plants. These are areas where, under normal operating conditions, there may be enough combustible dust in the air to produce explosive or ignitable mixtures.
- Class III (Article 503): Areas that are hazardous because of the presence of easily ignitable fibers or flyings in the air, although not in large enough quantity to product ignitable mixtures. Class III locations include cotton mills, rayon mills and clothing manufacturing plants.

Articles 511 and 514 regulate garages and similar locations where volatile or flammable liquids are used. While these areas are not always considered critically hazardous locations, there may be enough danger to require special precautions in the electrical installation. In these areas, the *NEC* requires that volatile gases be confined to an area not more than 18 inches above the floor. So in most cases, conventional raceway systems are permitted above this level. If the area is judged critically hazardous, *explosion-proof* wiring (including seal-offs) may be required.

Article 520 regulates theaters and similar occupancies where fire and panic can cause hazards to life and property. Drive-in theaters do not present the same hazards as enclosed auditoriums. But the projection rooms and adjacent areas must be properly ventilated and wired for the protection of operating personnel and others using the area.

Chapter 5 also covers residential storage garages, aircraft hangers, agricultural buildings, service stations, bulk storage plants, health care facilities, marinas and boatyards, mobile homes and parks, and recreation vehicles and parks.

### **Special Equipment**

Article 600 covers electric signs and outline lighting. Article 610 applies to cranes and hoists. Article 620 covers the majority of the electrical work involved in the installation and operation of elevators, dumbwaiters, escalators and moving walks. The manufacturer is responsible for most of this work. The electrician usually just furnishes a feeder terminating in a means of disconnect in the bottom of the elevator shaft. The electrician may also be responsible for a lighting circuit to a junction box midway in the elevator shaft for connecting the elevator cage lighting cable and exhaust fans. Articles in Chapter 6 of the *NEC* give most of the requirements for these installations.

Article 625 covers electric battery charging system requirements for plug-in hybrid electric vehicles (PHEV). Article 626 regulates installation of parking spaces for electrified trucks. Connecting to Truck Stop Electrification (TSE) equipment will allow truck operators to use on-board air conditioning, heating and appliances without running their engines.

Article 630 regulates electric welding equipment. It is normally treated as a piece of industrial power



equipment requiring a special power outlet. But there are special conditions that apply to the circuits supplying welding equipment. These are outlined in detail in Chapter 6 of the *NEC*.

Article 640 covers wiring for sound-recording and similar equipment. This type of equipment normally requires low-voltage wiring. Special outlet boxes or cabinets are usually provided with the equipment. But some items may be mounted in or on standard outlet boxes. Some sound-recording electrical systems require direct current, supplies from rectifying equipment, batteries or motor generators. Low-voltage alternating current comes from relatively small transformers connected on the primary side to a 120-volt circuit within the building.

Other items covered in Chapter 6 of the *NEC* include: information technology equipment (Article 645), sensitive electronic equipment (Article 647), pipe organs (Article 650), X-ray equipment (Article 660), induction and dielectric heat-generating equipment (Article 665), electrolytic cells (Article 668), electroplating (Article 669), industrial machines (Article 670), and irrigation machines (Article 675). Articles 680 and 682 regulate installations of swimming pools, fountains, spas, and natural or artificially-made bodies of water. Articles 685 through 692 cover items like integrated electric systems, solar photovoltaic (PV) systems, and fuel cells. Article 694 covers the increasingly popular small wind electric systems. This article governs the wiring requirements as well as connection to other sources. It's advisable to pay particular attention to these newer code articles, as most states like to include numerous questions on newer code changes. Chapter 6 ends with Article 695, covering Fire Pumps.

If you ever have work that involves Chapter 6, study the chapter *before work begins*. That can save a lot of installation time. Here is another way to cut down on labor hours and prevent installation errors. Get a set of rough-in drawings of the equipment being installed. It is easy to install the wrong outlet box or to install the right box in the wrong place. Having a set of rough-in drawings can prevent those simple but costly errors.

### **Special Conditions**

In most commercial buildings, the *NEC* and local ordinances require a means of lighting public rooms, halls, stairways and entrances. There must

be enough light to allow the occupants to exit from the building if the general building lighting is interrupted. Exit doors must be clearly indicated by illuminated exit signs.

Chapter 7 of the *NEC* covers the installation of emergency lighting systems. These circuits should be arranged so that they can automatically transfer to an alternate source of current, usually storage batteries or gasoline-drive generators. As an alternative, you can connect them to the supply side of the main service so disconnecting the main service switch would not disconnect the emergency circuits. The 2014 *NEC* added Article 728 concerning the topic of fire resistive cable systems and Article 750 covering energy management systems.

Chapter 8 covers communication systems and is not subject to the requirements of Chapters 1 through 7, except where specifically referenced. In addition to communications circuits, Chapter 8 covers: radio and television equipment, antennas and distribution systems, network-powered broadband systems, and the newly-added Article 840 (premise-powered broadband communication systems).

### **How to Prepare for the Exam**

This book is a guide to preparing for the journeyman or master electrician's exam. It isn't a substitute for studying the recommended references and it won't teach you the electrical trade. But it will give you a *complete knowledge of the type of questions* asked in the electrician's exam. It will also give you a "feel" for the examination and provide some of the confidence you need to pass.

Emphasis is on multiple-choice questions because that's the style that nearly all tests utilize. Questions are grouped into chapters. Each chapter covers a single subject. This will help you discover your strengths and weaknesses. Then when you take the two "final" sample exams in the back of this book, analyze the questions you miss. You'll probably notice you are weaker in some subjects than others. When these areas have been discovered, you will know that further study is necessary in these areas.

In answering questions on the *NEC*, remember this point: All exam questions are based on *minimum NEC requirements*. If the minimum wire size permitted under the *NEC* to carry 20 amperes is

No. 12 AWG and you answer No. 10 AWG (minimum size for 30 amperes) just to play it safe, your answer is *incorrect*.

The preparatory questions in the front part of this book have the answer after each question. When reading a question, cover the answer. Read the question carefully. Mark your answer on a separate sheet of paper before looking at the correct answer. Check to see if your answer is correct. If it isn't, read the code responses to find out why it is wrong.

### **How to Study**

Set aside a definite time to study, following a schedule that meets your needs. Studying a couple of hours two or three nights each week is better than studying all day on, say, Saturdays. The average mind can only concentrate for approximately four hours without taking a break. There's no point in studying if you don't retain much of the information. Study alone most of the time, but spend a few hours reviewing with another electrician buddy before exam day. You can help each other dig out the facts and concepts you will need to pass the exam.

Try to study in a quiet, well-lighted room that is respected as your study space by family members and friends. If it's hard to find a spot like that in your home, go to the local library where others are reading and studying.

Before you begin to study, spend a few minutes getting into the right frame of mind. That's important. You don't have to be a genius to pass the electrician's exam. But good motivation will nearly guarantee your success. No one can provide that motivation but *you*. Getting your license is a goal you set for yourself; it's your key to the future — a satisfying career in the electrical industry.

As you study the *NEC* and other references, highlight important points with a marker. This makes it easier to find important passages when you're doing the final review — and when you're taking the exam.

Put paper tabs on the corners of each major section in all the references you will take into the exam room. On the portion of the tab that extends beyond the edge of the book, write the name of the section or the subject. That makes locating each section easier and quicker — an important consideration on an open book test. Speed in locating

answers is important. In the sample exams at the end of this book, which are based on actual state and county examinations, you will have from two to four minutes to answer each question, so you don't have time to daydream or mess around. If you want to pass the exam, you must take it seriously.

Your study plan should allow enough time to review each reference at least three times. Read carefully the first time. The next review should take only about 10% of the time that the first reading took. Make a final review of all references and notes on the day before the exam. *This is the key to success in passing the exam: Review, review, review!* The more you review, the better your grasp of the information and the faster you will be able to find the answers.

### **The Examination**

Questions on state and local examinations are usually compiled by members of the electrician's examination board. Board members usually include several electrical contractors, a registered electrical engineer, electrical inspectors, and perhaps a trade school instructor. Most electrician's exams will include questions on the *NEC*, general knowledge of electrical practice, theoretical questions, and local ordinance rules. All of these fields are covered in this preparation guide. Questions about the *NEC*, including rules and design calculations, comprise from 70% to 80% of the examination.

State examinations are usually given twice a year, or perhaps every three months. County and local exams may be taken almost any time with prior notice to the local inspectors. Most have several basic exams that are used in rotation. But the same examination will never be administered twice in a row.

The people compiling the exams maintain a bank of several hundred questions covering each test subject. Questions are selected at random, and chances are that some of the questions on any exam have already been used on an earlier examination. Many of the questions appearing on actual electrician's exams will closely resemble questions appearing in this book.

The format of the actual examination, the time allowed, and the reference material which the applicant may be allowed to take into the examination room vary with each locality. Typically, an applicant is allowed six to eight hours to complete the examination. Applicants are usually required

to report to the examination room at 8 a.m. where the proctors take about 15 minutes to explain the rules of taking the exam. The applicants then work on the “morning” exam until noon. After an hour break for lunch, the “afternoon” exam begins at 1 p.m. and applicants are given until about 4 p.m. to complete this portion.

### **The Answer Sheet**

Most answer sheets used today are designed for computer grading. Each question on the exam is numbered. Usually there will be four or five possible responses for each question. You will be required to mark the best answer on the answer sheet. The following is a sample of a multiple-choice question:

- 1) Richmond is the capitol city of what state?
- (A) Florida                      (C) Virginia  
(B) Pennsylvania              (D) California

You should mark answer *C* for question 1 on the answer sheet.

Answer sheets will vary slightly for each examining agency so be sure to follow any instructions on that sheet. Putting the right answers on the wrong section will almost certainly cause you to fail.

### **The Night Before**

Give your mind a rest! If you have not prepared correctly for the exam by this time, then you can't cram it all into your brain in one night. So take it easy. If the place of the examination is more than an hour's drive from your home, you might want to stay at a motel in the city where the examination is being held. Getting up at, say, 4 a.m. and driving a couple of hours in heavy traffic will not help you to pass the exam. On the other hand, a drive to the location the afternoon before the exam, a good dinner and a relaxing evening watching TV will increase your possibilities of passing. Just don't stay up too late.

Be sure to have all of your reference material with you and get a good night's sleep before the day of the exam. If you have prepared yourself correctly, you should pass with flying colors.

### **Examination Day**

On the day of your examination, listen carefully to any oral instructions given and read the printed directions. Failing to follow instructions will probably disqualify you.

You will seldom find any trick questions, but many will require careful reading. Certain words (like *shall*, *should*, *always* and *never*) can make a big difference in your answer.

Sometimes several of the answers may seem possible, but only one will be correct. If you are not sure of the answer, use the process of elimination.

There are several ways to take an exam, but the following is the method I used to pass the Virginia State Electrical Contractor's Exam a few years ago. This method is merely a suggestion: if another way suits you best, by all means use it.

When the exam booklets were passed out and the applicants were given permission to open them, I spent the first few minutes going over the exam booklet, noting the number of questions. This allowed me to pace myself. I noted there were 100 questions on the morning exam — which gave me less than three minutes to spend on each one.

I then started with question No. 1. When I found one that I wasn't sure of, I merely skipped over this until I came to one that I definitely knew the answer. This way I had gone through the entire test booklet once and had answered about 50% of the questions in a little over one hour. I was quite sure that I had answered all of these questions correctly. However, 70% is usually the minimum passing grade and at this point, I had only 50% of the questions answered. But I still had about three hours to spend on the tougher questions.

I then started back at the beginning of the exam and went down the list of questions until I found one that was unanswered. This process continued until I had answered all questions to the best of my ability. I spent the remaining time reviewing my previous answers, making changes as necessary.

After lunch, the “afternoon” portion of the exam was handed out, and I used the same procedure as before. I found out a few days later that I had scored 94% on this examination.

## **What's New In This Edition?**

All questions and answers in this book have been updated to comply with the new 2014 *NEC*. Additional questions and answers, along with new illustrations, have been provided to encompass new *NEC* installation requirements. Wherever a change has occurred from the 2011 *NEC*, you will see an icon denoting that a change has been made. This icon appears below.



## Chapter 1

# Electrical Systems — General Requirements

---

Owing to the potential fire and explosion hazards caused by the improper handling and installation of electrical wiring, certain rules in the selection of materials, quality of workmanship, and precautions for safety must be followed. To standardize and simplify these rules and provide a reliable guide for electrical construction, the *National Electrical Code*<sup>®</sup> (*NEC*<sup>®</sup>) was developed. The *NEC*, originally prepared in 1897, is frequently revised to meet changing conditions, improved equipment and materials, and new fire hazards. It is the result of the best efforts of electrical engineers, manufacturers of electrical equipment, insurance underwriters, fire fighters, and other concerned experts throughout the country.

The *NEC* is now published by the National Fire Protection Association (NFPA), Batterymarch Park, Quincy, Massachusetts 02269. It contains specific rules and regulations intended to help in the practical safeguarding of persons and property from hazards arising from the use of electricity.

Although the *NEC* itself states, *This Code is not intended as a design specification nor an instruction manual for untrained persons*, it does provide

a sound basis for the study of electrical design and installation procedures — under the proper guidance. The probable reason for the *NEC*'s self-analysis is that the code also states, *This Code contains provisions considered necessary for safety. Compliance therewith and proper maintenance will result in an installation essentially free from hazard, but not necessarily efficient, convenient, or adequate for good service or future expansion of electrical use.*

The *NEC*, however, has become the bible of the electrical construction industry, and is usually the basis for most electrician's and electrical contractor's exams. Consequently, anyone involved in electrical work, in *any* capacity, should obtain an up-to-date copy, keep it handy at all times, and refer to it frequently.

To use the *NEC* properly, the definitions listed in Chapter 1, Article 100 of the *NEC* should be fully understood. General requirements for electrical installations are given in Article 110. Then, the remaining Chapters, Articles, and Sections should be studied.

**1-1 “Concealed” as applied to electrical wiring means:**

- A) Rendered inaccessible by the structure or finish of the building
- B) Capable of being reached quickly
- C) Capable of being removed without damage
- D) Admitting close approach

**Answer: A**

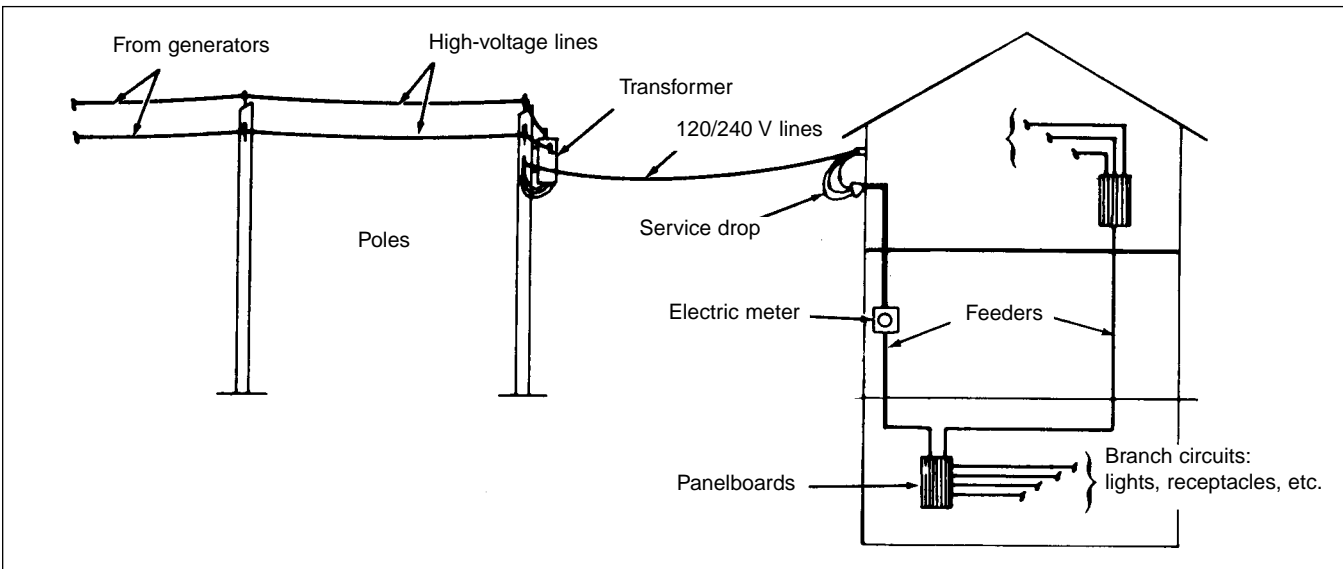
*For example, cables or raceways installed within, say, a drywalled partition are not accessible without damaging the finished wall and are considered to be concealed. Wires in concealed raceways are considered concealed, even though they may become accessible by withdrawing them. NEC Article 100 — Definitions.*

**1-2 A feeder is:**

- A) A circuit conductor between the final overcurrent device protecting the circuit and the outlet
- B) A branch circuit that supplies several outlets
- C) All circuit conductors between the service equipment, the source of a separately derived system, or other power supply source and the final branch-circuit overcurrent device.
- D) A device for generating electricity

**Answer: C**

*NEC Article 100 — Definitions. See Figure 1-1.*



**Figure 1-1:** Basic electric systems showing service-entrance, feeders to subpanels, and branch circuits

---

**1-3 A bonding conductor or jumper is:**

---

- A) A branch circuit that supplies only one utilization equipment
- B) A reliable conductor to ensure the required electrical conductivity between metal parts required to be electrically connected
- C) An adhesive used to insulate conductors
- D) Capable of being operated without exposing operator to contact with live parts

**Answer: B**

*NEC Article 100 — Definitions. See Figure 1-2.*

---

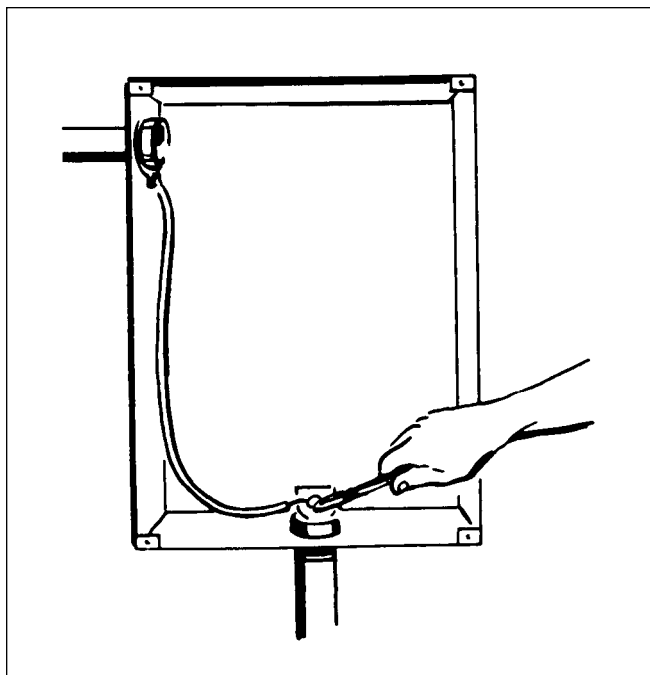
**1-4 In locations where electric equipment would be exposed to physical damage, the following must be provided:**

---

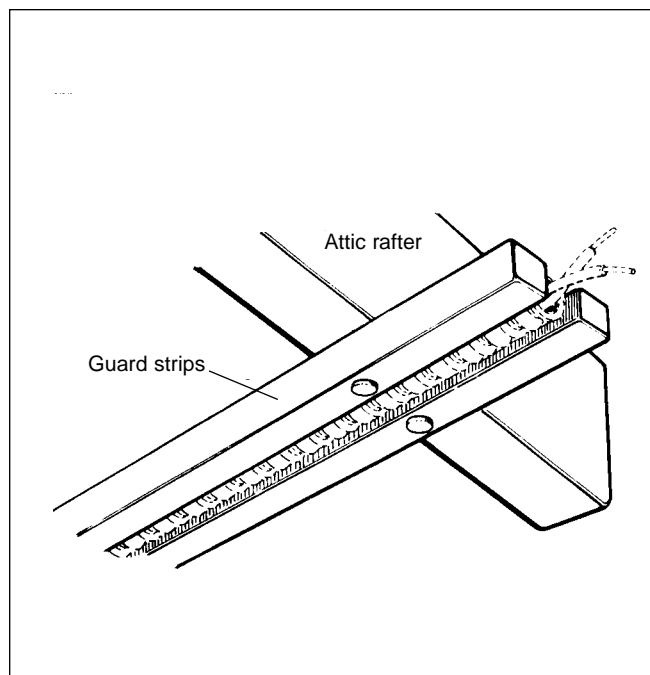
- A) Warning signs
- B) Sufficient headroom
- C) Working space
- D) Enclosures or guards

**Answer: D**

*NEC Section 110.27(B). See Figure 1-3.*



**Figure 1-2:** Panelboard housing with bonding jumpers



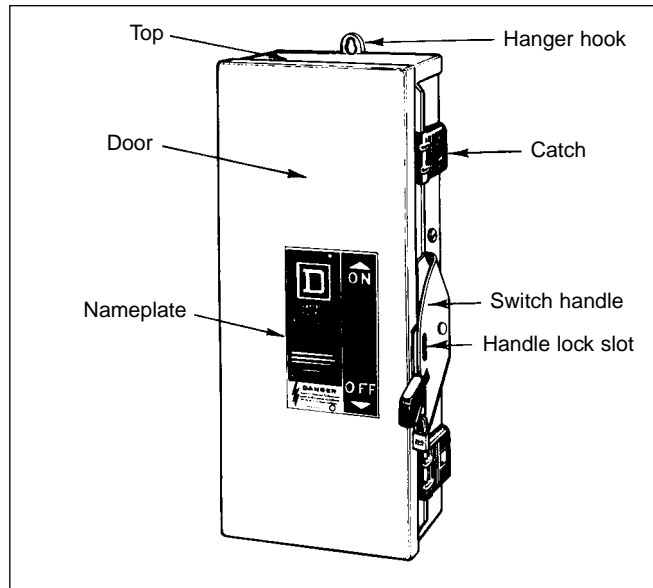
**Figure 1-3:** Guard strips protecting Type AC cable

**1-5 To provide access to the working space about electric equipment, the following number of entrances of sufficient size must be provided:**

- A) 3
- B) 2
- C) 1
- D) 4

**Answer: C**

*For example, an electrical equipment room in an office building would require only one entrance door to the room. This entrance shall be capable of giving access to and egress from the working space. NEC Section 110.26(C)(1).*



**Figure 1-4:** Externally-operated safety switch. The live interior parts are fully isolated, but the external handle enables the switch to be operated from the outside.

**1-6 Externally operable means:**

- A) Capable of being operated from the outside of a building
- B) An apparatus enclosed in a case
- C) Capable of being operated without exposing the operator to contact with live parts
- D) Surrounded by a case

**Answer: C**

*NEC Article 100 — Definitions. See Figure 1-4.*

**1-7 What must be provided for in all working spaces above service equipment?**

- A) A water faucet to flush operator's eyes
- B) A drinking fountain
- C) Illumination
- D) A wash basin

**Answer: C**

*A light fixture must be installed for the working spaces about any switchboards, switchgear, panelboards, etc. so adequate illumination (light) will be available for operation or repairs. Such lighting shall not be controlled by automatic means only. NEC Section 110.26(D).*





---

**1-8 Parts of electric equipment that in ordinary operation produce arcs, sparks, flames, or molten metal shall be enclosed or separated and isolated from:**

---

- A) All other electrical equipment
- B) All combustible material
- C) Electric lighting
- D) All working spaces

**Answer: B**

*NEC Section 110.18. Special rules apply for motors (430.14) and hazardous locations (Articles 500 through 517).*

---

---

**1-9 Working space in rooms containing electrical equipment shall not be used for:**

---

- A) Storage
- B) Maintenance and repair of equipment
- C) Testing purposes
- D) Inspection or servicing

**Answer: A**

*The area around electrical equipment must not be used for storage, so that maintenance and repairs may be readily made. When normally enclosed live parts are exposed for inspection or servicing, the working space, if in a passageway or open area, must be guarded. NEC Section 110.26(B).*

---

---

**1-10 In all cases where there are live parts normally exposed on the front of switchboards or motor control centers, the working space in front of such equipment shall not be less than:**

---

- A) 1 foot
- B) 3 feet
- C) 4 feet unless adequate protection is provided
- D) 18 inches

**Answer: B**

*Three feet is judged by the NEC to be adequate space (600 volts or under) so that workers may keep a safe distance from live electrical parts. NEC Table 110.26(A)(1).*

---

---

**1-11 Ampacity is defined as:**

---

- A) The electromotive force required to cause electrons to flow in conductors
- B) The amount of power in a circuit
- C) The maximum current, in amperes, that a conductor can carry continuously under the conditions of use without exceeding its temperature rating
- D) The voltage rating of any appliance

**Answer: C**

*NEC Article 100 — Definitions.*

---

**1-12 “Approved” as used in the NEC means:**

---

- A) Acceptable to the authority having jurisdiction
- B) Acceptable only when specified in local ordinances
- C) Okay for use in hazardous locations
- D) Usable only for inside work

**Answer: A**

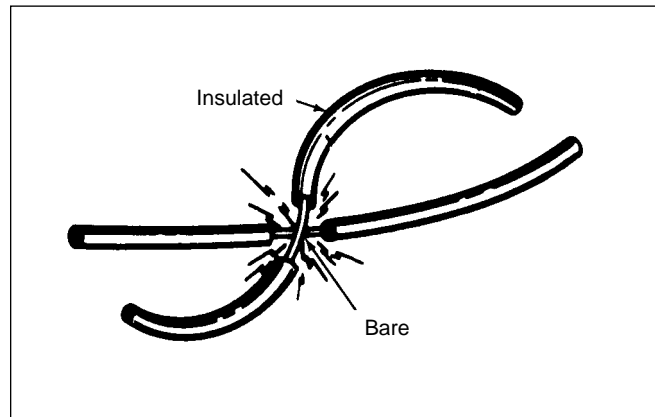
*In most cases, the local city, county, or state electrical inspector is the “authority” having jurisdiction. NEC Article 100 — Definitions.*

---

**1-13 A bare conductor is one with:**

---

- A) Several layers of thermoplastic insulation
- B) Only one layer of insulation
- C) A covering that is not recognized by the NEC as electrical insulation
- D) No covering or insulation whatsoever



**Figure 1-5:** Bare conductor compared to one with insulation

**Answer: D**

*A bare conductor, such as a service grounding wire, has no cover or insulation. NEC Article 100 — Definitions, Conductor, Bare. See Figure 1-5.*

---

**1-14 Which of the following anchors may not be used to secure electrical equipment to masonry walls?**

---

- A) Lead anchors approved for the weight of the equipment
- B) Toggle bolts
- C) Threaded studs “shot” into the masonry
- D) Wooden plugs driven into holes in the masonry for holding wood screws

**Answer: D**

*NEC Section 110.13(A). See Figure 1-6.*

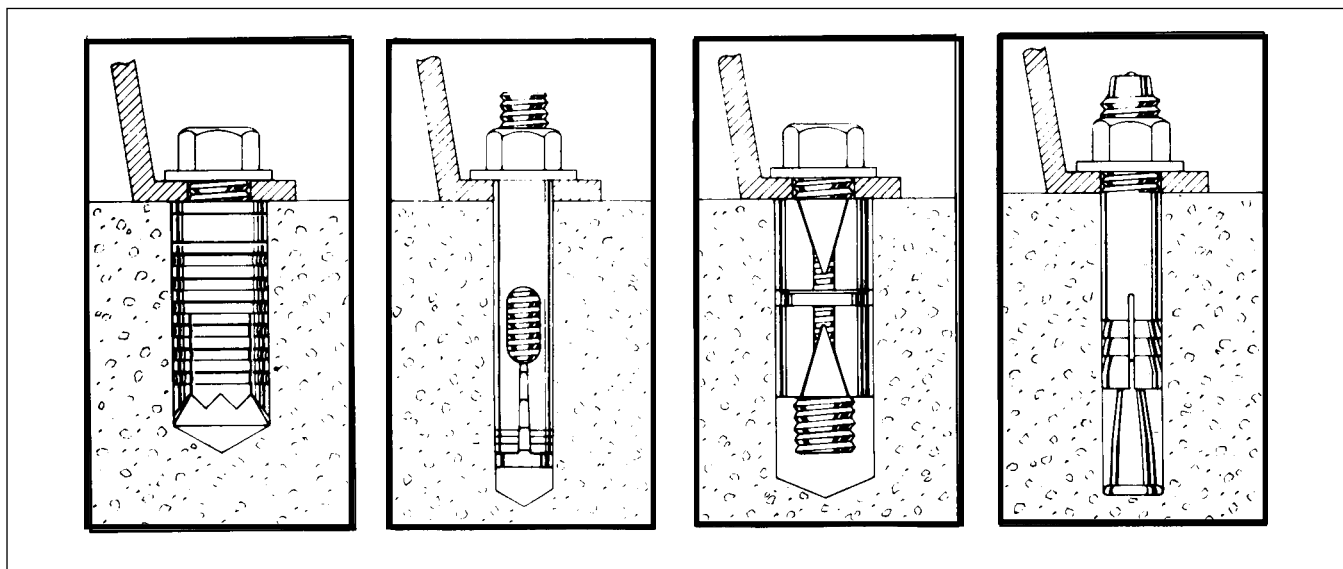


Figure 1-6: Several types of anchors suitable for installing electrical equipment

**1-15** A device designed to open and close a circuit by nonautomatic means and to open the circuit automatically on a predetermined overcurrent without damage to itself when properly applied within its rating is called a:

- A) Nonfusible disconnect switch
- B) Time-delay fuse
- C) Circuit breaker
- D) Motor running overcurrent protector

**Answer: C**

*NEC Article 100 — Definitions. See Figure 1-7.*

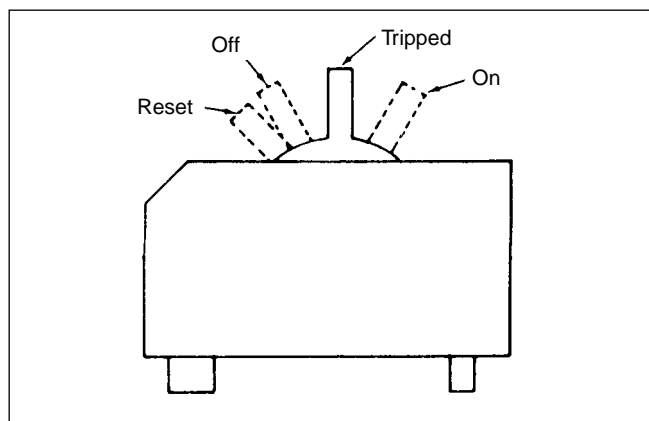


Figure 1-7: Operating characteristics of a circuit breaker

**1-16** A conductor encased within material of composition or thickness that is recognized by the NEC as electrical insulation is known as:

- A) A bare conductor
- B) A covered conductor
- C) A concealed conductor
- D) An insulated conductor

**Answer: D**

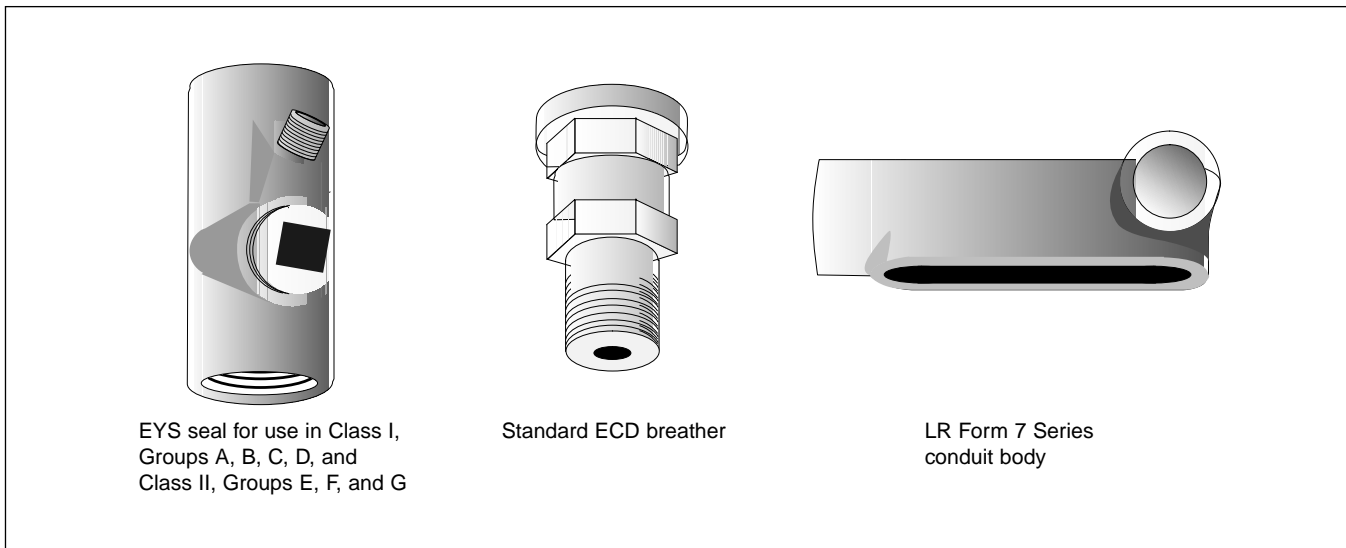
*NEC Article 100 — Definitions, Conductor, Insulated.*

**1-17** A separate portion of a conduit or tubing system that provides access through a removable cover(s) to the interior of the system at a junction of two or more sections of the system or at a terminal point of the system is defined as a:

- A) Conduit body
- B) Conduit junction
- C) Conduit intersection
- D) Conduit T-connector

**Answer:** A

*NEC Article 100 — Definitions. See Figure 1-8.*



**Figure 1-8:** Several types of conduit bodies

**1-18** What device is now required to detect and protect against arcing in 15- and 20-amp branch circuits supplying outlets installed in dwelling units?

- A) AFCI
- B) GFCI
- C) GFI
- D) AFFI



**Answer:** A

*Outlets installed in dwelling unit kitchens, family rooms, dining rooms, living rooms, laundry rooms. . . or similar rooms or areas shall be protected by a listed arc-fault circuit interrupter, combination-type. NEC Section 210.12(A)(1). The definition of arc-fault circuit interrupter has been added to Article 100 — Definitions.*

**1-19 Which circuits must not be connected to any system containing trolley wires with a ground return?**

---

- A) Ground wires
- B) Grounding conductors
- C) Circuits for lighting and power
- D) Ungrounded trolley wires

**Answer: C**

*No other “live” or ungrounded conductors may be connected except those specifically designed for trolley operation. NEC Section 110.19.*

**1-20 The minimum headroom of working spaces about service equipment, switchboards, panelboards, or motor control centers shall be at least:**

---

- A) 6½ feet
- B) 8 feet
- C) 5.75 feet
- D) 10 feet

**Answer: A**

*The NEC judges 6½ feet working space, or the height of the equipment, to be adequate above service equipment to provide room for an electrician to service the equipment. This measurement is taken from the floor to ceiling of, say, an electrical equipment room; not from the top of the panelboard. NEC Section 110.26(A)(3).*

**1-21 Indoor electrical installations over 600 volts that are open to unqualified persons shall be made with:**

---

- A) Open switchgear with readily accessible live parts
- B) Metal-enclosed equipment
- C) Provisions to enclose the equipment within a barrier less than 8 feet high
- D) The approval of both the I.B.E.W. and the I.E.S.



**Answer: B**

*Equipment accessible to unqualified persons shall be metal-enclosed. NEC Section 110.31(B)(1). In addition, associated equipment over 600 volts shall be marked with appropriate caution signs. NEC Section 110.34(C).*

**1-22 The entrance provided to give access to the working space about electric equipment rated over 600 volts must not be less than:**

---

- A) 6 feet × 6 feet  
B) 24 feet × 6 feet  
C) 2 feet × 6 feet  
D) 2 feet × 6½ feet



**Answer: D**

*Additionally, door(s) shall open in the direction of egress and be equipped with listed panic hardware. NEC Section 110.33(A)(3).*

**1-23 Where switches, or other equipment operating at 600 volts, nominal, or less, are installed in a room or enclosure where there are exposed energized parts or wiring operating at over 600 volts, the high-voltage equipment shall be effectively separated from the space occupied by the low-voltage equipment by a suitable:**

---

- A) Warning sign  
B) Partition, fence or screen  
C) Voltage-reducing transformer  
D) Firewall

**Answer: B**

*A partition to prevent contact between the two systems must be installed. NEC Section 110.34(B).*

**1-24 An enclosed channel designed expressly for holding wires, cables, or busbars is called:**

---

- A) A hose  
B) A raceway  
C) A receptacle  
D) A panelboard

**Answer: B**

*A raceway may be conduit or piping, auxiliary wire troughs (gutters), busducts, wire trays, etc. NEC Article 100 — Definitions.*

**1-25 A contact device installed at the outlet for the connection of an attachment plug is called:**

---

- A) A terminator  
B) A junction box  
C) An overcurrent protection device  
D) A receptacle

**Answer: D**

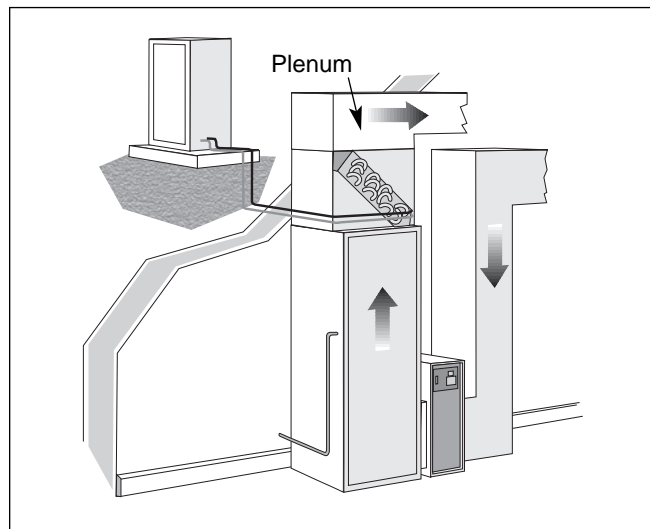
*NEC Article 100 — Definitions.*

**1-26 A compartment or chamber to which one or more air ducts are connected and that forms part of the air distribution system is a:**

- A) Plenum
- B) Duct
- C) Fan-coil unit
- D) Air valve

**Answer: A**

*NEC Article 100 — Definitions. See Figure 1-9.*



**Figure 1-9:** An air-distribution system showing a plenum and related air ducts

**1-27 The NEC definition of “Qualified Person” is one who:**

- |   |   |
|---|---|
| <ul style="list-style-type: none"> <li>A) Has been elected by the Inspection office</li> <li>B) Has skills and knowledge related to the construction and operation of the electrical equipment and installations and has received safety training to recognize and avoid the hazards involved.</li> </ul> | <ul style="list-style-type: none"> <li>C) Has served two years apprenticeship training with a labor organization</li> <li>D) Has a college degree in electrical engineering or electrical technology</li> </ul> |
|---|---|

**Answer: B**

*A licensed electrician and a professional electrical engineer are two such “qualified” persons. NEC Article 100 — Definitions.*

**1-28 An unintentional, electrically conductive connection between an ungrounded conductor and the normally non-current-carrying conductors, metallic enclosures, metallic raceways, metallic equipment, or earth, is called:**

- |  |  |
|--|--|
| <ul style="list-style-type: none"> <li>A) Arc fault</li> <li>B) Stray current</li> </ul> | <ul style="list-style-type: none"> <li>C) Ground fault</li> <li>D) High impedance</li> </ul> |
|--|--|



**Answer: C**

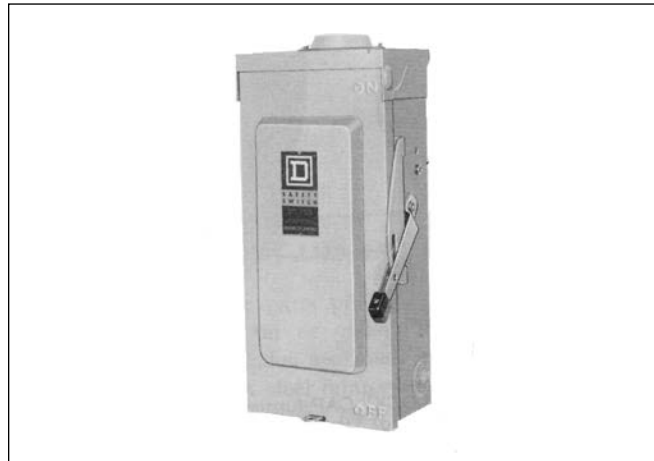
*The definition of “Ground Fault” has been relocated from NEC Section 250.2 to Article 100 — Definitions.*

**1-29** When an enclosure has been constructed so that exposure to a beating rain will not result in the entrance of water under specified test conditions, the enclosure is known as:

- A) Rainproof
- B) Drip-proof
- C) Raintight
- D) Multioutlet assembly

**Answer: C**

*This type of enclosure is designed to keep rain water out of the device. NEC Article 100 — Definitions. See Figure 1-10.*



**Figure 1-10:** A typical raintight enclosure

**1-30** A point on the wiring system at which current is taken to supply utilization equipment is known as:

- A) An outlet
- B) A wall switch
- C) A load center
- D) A motor-control center

**Answer: A**

*NEC Article 100 — Definitions.*

**1-31** The agency that publishes the *NEC* is abbreviated:

- A) HVAC
- B) EEEEC
- C) NFPA
- D) NRA

**Answer: C**

*The National Fire Protection Association.*



**1-32 A raceway is an enclosed channel designed for holding:**

- A) Wires, cables or busbars
- B) Automotive equipment
- C) Spark-plug wires
- D) Equipment for high-speed autos



**Answer: A**

*A conduit, such as rigid steel conduit, unlike plumbing pipe, is designed to contain electrical conductors. A raceway is identified within specific article definitions. NEC Article 100 — Definitions.*

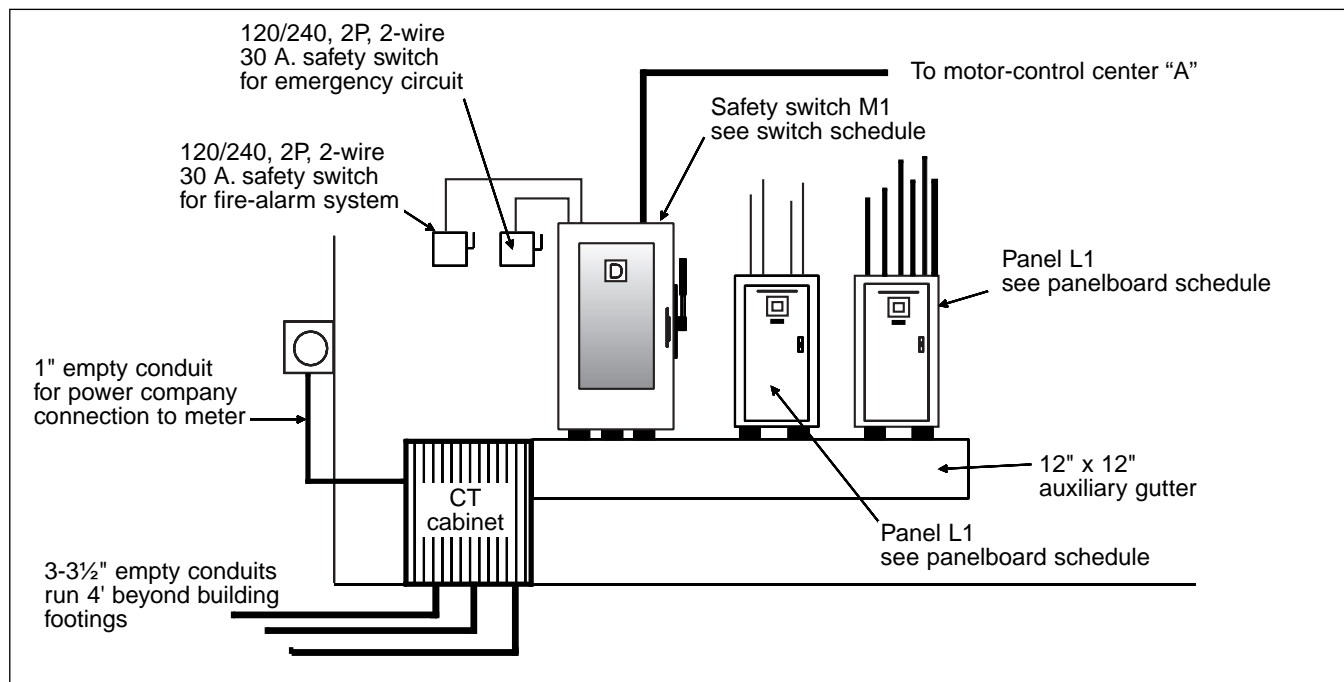
**1-33 A large single panel, frame, or assembly of panels, on which are mounted on the face, back, or both, switches, overcurrent and other protective devices will fall under the definition of:**

- A) General-use switch
- B) Thermal protector
- C) Switchboard
- D) Cutout



**Answer: C**

*Switchboards are generally accessible from the rear as well as from the front and are not intended to be installed in cabinets. NEC Article 100 — Definitions. See Figure 1-11.*



**Figure 1-11:** An assembly of safety switches, auxiliary gutters, and conduit nipples used for service equipment exactly as they appear on electrical working drawings

**1-34 Any electric circuit that controls any other circuit through a relay is called a:**

- A) Remote-control circuit
- B) Power circuit
- C) Overload relay
- D) Motor control circuit

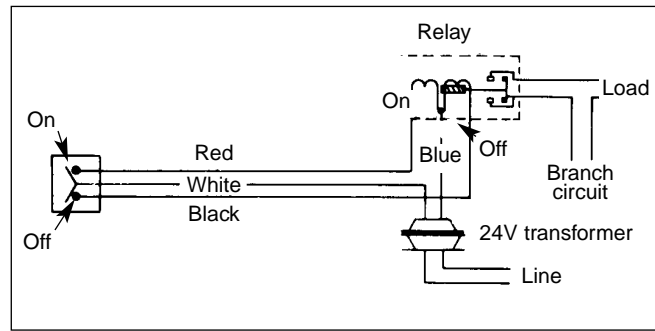


Figure 1-12: Typical remote-control circuit

**Answer: A**

*NEC Article 100 — Definitions. See Figure 1-12.*

**1-35 Any electric circuit that energizes signaling equipment is known as a:**

- A) Low-voltage branch circuit
- B) Multiwire circuit
- C) Signaling circuit
- D) Feeder circuit

**Answer: C**

*For example, a circuit consisting of a low-voltage transformer, pushbuttons, door chime, and conductors is a signaling circuit; so is a security alarm system. NEC Article 100 — Definitions.*

**1-36 A device that, by insertion in a receptacle, establishes connection between the conductors of the attached flexible cord and the conductors connected permanently to the receptacle is called one of the following:**

- A) Female plug
- B) Circuit breaker
- C) Controller
- D) Attachment plug

**Answer: D**

*Also called a plug cap or plug. NEC Article 100 — Definitions. See Figure 1-13.*

		15 ampere		20 ampere		30 ampere	
		Receptacle	Plug cap	Receptacle	Plug cap	Receptacle	Plug cap
2 - pole 2 - wire	1 125 V	1-15R	1-15P				
	2 250 V		2-15P	2-20R	2-20P	2-30R	2-30P
2 - pole 3 - wire grounding	5 125 V	5-15R	5-15P	5-20R	5-20P	*  5-30R	*  5-30P
	6 250 V	6-15R	6-15P	6-20R	6-30P	*  6-30R	*  6-30P
3 - pole 3 - wire	7 277 V	7-15R	7-15P	7-20R	7-30P	7-30R	7-30P
	10 125/ 250 V			10-20R	10-20P	10-30R	10-30P
	11 3 $\phi$ $\Delta$ 250 V	*  11-15R	*  11-15P	*  11-20R	*  11-20P	*  11-30R	*  11-30P
3 - pole 4 - wire grounding	14 125/ 250 V	*  14-15R	*  14-15P	*  14-20R	*  14-20P	*  14-30R	*  14-30P
	15 3 $\phi$ $\Delta$ 250 V	*  15-15R	*  15-15P	*  15-20R	*  15-20P	*  15-30R	*  15-30P
4 - pole 4 - wire	18 3 $\phi$ Y 120/ 208 V	18-15R	18-15P	18-20R	18-20P	*  18-30R	*  18-30P

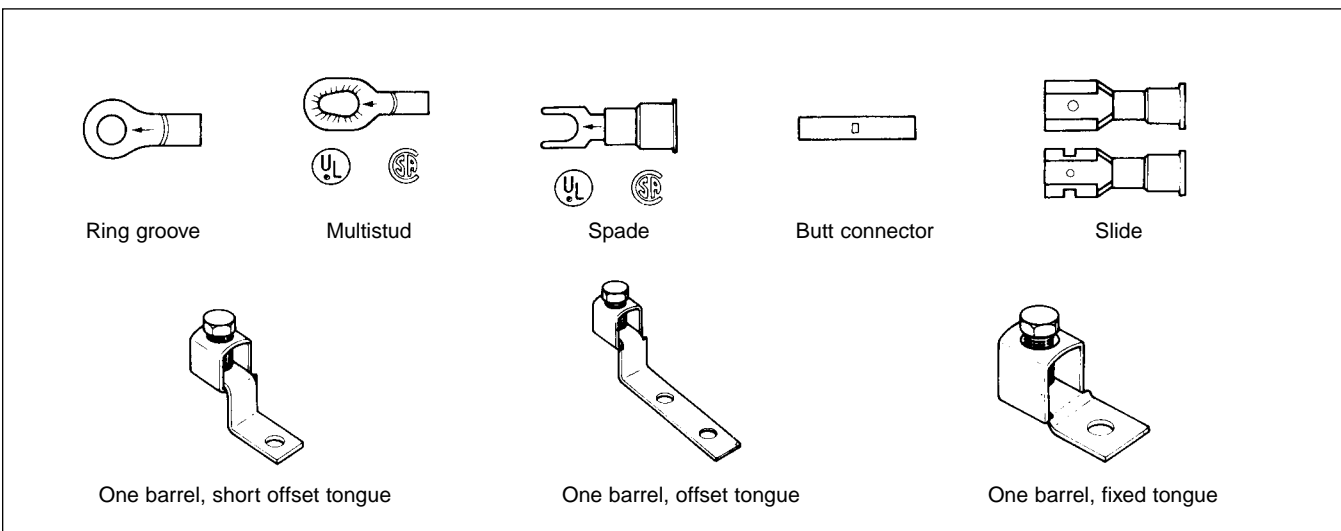
Figure 1-13: Several types of attachment-plug configurations

**1-37 A device that establishes a connection between two or more conductors by means of mechanical pressure and without the use of solder is called:**

- A) An explosionproof connector with seal-offs
- B) A pressure connector
- C) A wire nut
- D) A shrink connector

**Answer: B**

*NEC Article 100 — Definitions, Connector, Pressure (Solderless). See Figure 1-14.*



**Figure 1-14:** Several types of pressure connectors used in electrical work

**1-38 A continuous load is a load where the maximum current is expected to continue for a certain length of time. This time is:**

- A) One hour or more
- B) Two hours or more
- C) Three hours or more
- D) Four hours or more

**Answer: C**

*For example, electric baseboard heaters in the coldest weather will more than likely operate for longer than three hours. Therefore, circuits feeding these units must be rated as “continuous.” NEC Article 100 — Definitions.*

---

**1-39** What is a branch circuit called that supplies a number of outlets for lighting and appliances?

---

- A) An appliance branch circuit
- B) An individual branch circuit
- C) A general-purpose branch circuit
- D) A multiwire branch circuit

**Answer: C**

*A general purpose branch circuit supplies two or more receptacles or outlets for lighting and appliances. (Circuits feeding any duplex receptacles other than small appliance and laundry equipment are also general purpose branch circuits.) NEC Article 100 — Definitions, Branch Circuit, General-Purpose.*

---

**1-40** A device used to govern, in some predetermined manner, the electric power delivered to an electric apparatus is called a:

---

- A) Controller
- B) Heater
- C) Governor
- D) Motor starter

**Answer: A**

*A wall switch controlling a lighting fixture is one. A motor starter or controller is another example. A rheostat or electronic dimmer used to vary the light intensity is also a controller. NEC Article 100 — Definitions.*

---

**1-41** Which of the following qualifying terms indicate that a circuit breaker can be set to trip at various values of current, time, or both, within a predetermined range?

---

- A) Accessible
- B) Adjustable
- C) Setting
- D) Concealed

**Answer: B**

*The term “adjustable” (as applied to circuit breakers) means that the circuit breaker can be set to trip at various values of current, time, or both, within a predetermined range. NEC Article 100 — Definitions, Circuit Breaker, Adjustable.*

**1-42 The ratio of the maximum demand of a system, or part of a system, to the total connected load of the system or the part of the system under consideration is known as:**

---

- A) Percentage
- B) Duty cycle
- C) Rated-load current
- D) Demand factor

**Answer: D**

The NEC recognizes that every electrical outlet or piece of electric equipment will not all be operating simultaneously. Therefore, the NEC allows a demand factor for certain installations. NEC Article 100 — Definitions.

**1-43 Electric parts that are not suitably guarded, isolated, or insulated and are capable of being inadvertently touched or approached nearer than a safe distance by a person are known as:**

---

- A) Exposed
- B) Externally operable
- C) Accessible
- D) Dead front

**Answer: A**

A switchboard with knife switches, for example, has exposed live electrical parts. NEC Article 100 — Definitions.

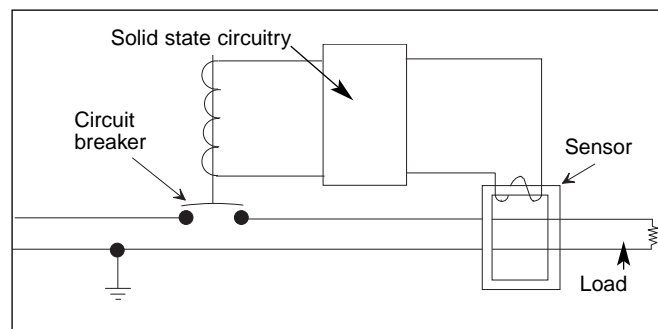
**1-44 A device intended for the protection of personnel that functions to de-energize a circuit or portion thereof within an established period of time when a current to ground exceeds the values established for a class A device.**

---

- A) Grounding electrode device
- B) Ground-fault circuit-interrupter (GFCI)
- C) Guarded protector
- D) Thermal cutout

**Answer: B**

Class A GFCIs trip when the current to ground has a value in the range of 4-6 mA. Ground-fault circuit-interrupters are required on all residential receptacles installed outdoors, in bathrooms and kitchens, and in garages, etc. NEC Article 100 — Definitions. See Figure 1-15.



**Figure 1-15:** Ground-fault circuit-interrupter circuit

---

**1-45 The NEC uses the term “isolated” to mean:**

---

- |   |   |
|---|---|
| A) Not readily accessible to persons unless special means for access are used | C) Identifiable by means of color coding or nameplate |
| B) Grouped together   | D) Nearby   |

**Answer: A**

*For example, a safety switch with a means of locking the access door to live interior parts would be considered to be not readily accessible. NEC Article 100 — Definitions.*

---

**1-46 Accessories such as locknuts, bushings, etc. are known as:**

---

- |                   |                 |
|-------------------|-----------------|
| A) Connectors     | C) Fittings     |
| B) Conduit bodies | D) Ground clips |

**Answer: C**

*A fitting can be a locknut, bushing, or other part of a wiring system that is intended to perform a mechanical rather than an electrical function. NEC Article 100 — Definitions.*

---

**1-47 An arrangement of incandescent lamps or electric discharge lighting to call attention to certain features such as the shape of a building is called:**

---

- |   |   |
|---|---|
| A) Festoon lighting used for outdoor parties and to highlight other outdoor functions | C) High-intensity discharge lighting such as normally used at intersections of highways |
| B) Outline lighting   | D) Decorative lighting inside a building  |

**Answer: B**

*Lighting fixtures of many types, but especially neon, are used to highlight signs, buildings, and the like. Las Vegas gambling casinos are a good example of how outline lighting is used to highlight and outline buildings or windows. NEC Article 100 — Definitions.*

---

**1-48 Operation of equipment in excess of normal, full-load rating is known as:**

---

- A) Hot load
- B) Under current
- C) Overload
- D) Periodic duty

**Answer: C**

*For example, a conductor operating in excess of its rated ampacity that, if it persists for a sufficient length of time, would cause damage or dangerous overheating. A fault, such as a short circuit or ground fault, is not an overload. NEC Article 100 — Definitions.*

---

**1-49 The value of current, time, or both at which an adjustable circuit breaker is set to trip is known as:**

---

- A) Inverse time
- B) Ampacity
- C) Automatic
- D) Setting

**Answer: D**

*The setting of a circuit breaker is the value of current, time, or both at which an adjustable circuit breaker is set to trip. NEC Article 100 — Definitions, Circuit Breaker, Setting.*

---

**1-50 Which of the following must not be allowed to come in contact with interior parts of electrical equipment?**

---

- A) Busbars
- B) Wiring terminals
- C) Abrasives
- D) Insulators

**Answer: C**

*NEC Section 110.12(B) states that internal parts of electrical equipment must not be damaged or contaminated by foreign materials such as paint, plaster, cleaners, abrasives or corrosive residues.*



---

**1-51 How tall must a wall, screen, or fence be that encloses an outdoor electrical installation over 600 volts to deter access by unqualified persons?**

---

- A) 5 feet
- B) 6 feet
- C) 7 feet
- D) 8 feet

**Answer: C**

*NEC Section 110.31 requires a wall, screen, or fence to be not less than 7 feet in height when it is used to enclose an outdoor electrical installation with voltages over 600 volts.*

---

**1-52 Entrances to all rooms or other enclosures containing exposed live parts operating at over 600 volts, nominal, shall be:**

---

- A) Elevated 30 feet above ground
- B) Painted yellow with black and blue stripes
- C) Kept unlocked for immediate servicing
- D) Kept locked



**Answer: D**

*NEC Section 110.34(C) requires that entrances to all buildings, vaults, rooms, or enclosures containing exposed live parts or exposed conductors operating at over 600 volts, nominal, be kept locked unless such entrances are under the observation of a qualified person at all times. In addition, permanent “danger” signs shall be provided that meet the requirements in NEC Section 110.21(B).*

---

**1-53 A “bathroom” is an area that includes a basin with one or more of the following:**

---

- A) Exhaust fan
- B) AFCI
- C) Closet
- D) Bidet

**Answer: D**

*The definition of “bathroom” was revised in 2011 to include “a urinal” and “a bidet, or similar plumbing fixtures.” NEC Article 100 — Definitions.*

---

**1-54 Which of the following best describes festoon lighting?**

---

- A) A string of outdoor lights that is suspended between two points      C) Low voltage lighting used on billboards  
B) A 600 volt lighting system used in power plants      D) Underwater lighting in pools and ponds

**Answer: A**

*Defined in NEC Article 100 — Definitions.*

---

**1-55 What is the term used to describe an enclosing case constructed so that dust will not enter under specified test conditions?**

---

- A) Dustproof      C) Dusttight  
B) Dust prevention      D) Explosionproof

**Answer: C**

*NEC Article 100 — Definitions.*

---

**1-56 What is an assembly of one or more enclosed sections having a common power supply (bus) and principally containing motor control units called?**

---

- A) Main distribution panel      C) Motor load center  
B) Motor control center      D) Selector-switch control center

**Answer: B**

*NEC Article 100 — Definitions states that the described apparatus is referred to as a “motor control center.” See Figure 1-16.*

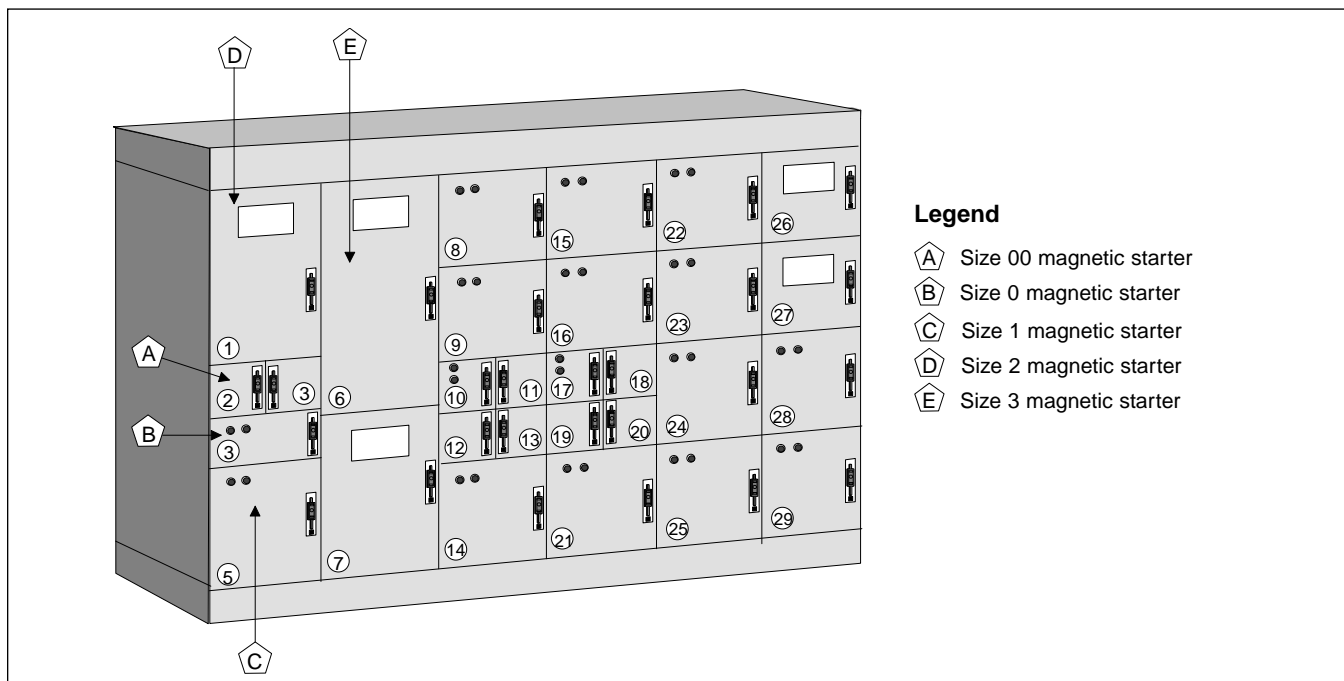


Figure 1-16: Typical motor control center

**1-57** What is the name of an electrical load where the wave shape of the steady-state current does not follow the wave shape of the applied voltage?

- A) Linear
- B) Parallel load
- C) Nonlinear load
- D) Series load

**Answer: C**

*NEC Article 100 — Definitions.*

**1-58** How many access entrances are required to working space about electrical equipment rated 1200 amperes or more and over 6 feet wide?

- A) One
- B) Two, one at each end of the area
- C) Three, one on each of three sides
- D) Four, one on each of four sides

**Answer: B**

*NEC Section 110.26(C)(2) requires one entrance not less than 24 inches wide and 6½ feet high at each end of the work space to allow entrance to and egress from the work space. Additional requirements apply to the installation and hardware requirements of such doors.*

---

**1-59 When the electrical equipment exceeds 6½ feet in height, what is the required minimum headroom?**

---

- A) One foot higher than the top of the highest piece of equipment
- B) Not less than the height of the equipment
- C) 6 inches more than the height of the equipment
- D) 4 feet more than the height of the equipment

**Answer: B**

*NEC Section 110.26(A)(3) requires a minimum headroom working space of 6½ feet; the minimum headroom shall not be less than the height of the equipment if the equipment exceeds 6½ feet in height.*

---

**1-60 Where must branch circuits and feeders be identified?**

---

- A) At the disconnecting means
- B) At the point where they terminate
- C) At both the point where they originate and the point where they terminate
- D) Midway between the outlet and overcurrent protective device

**Answer: A**

*NEC Section 110.22 requires circuit identification at the disconnecting means. This is usually at the main distribution panel for feeders and at subpanels for branch circuits. If overcurrent protective devices are located properly, this is the location where the circuits should be identified. The marking shall be able to withstand the environment involved.*

---

**1-61 What is the minimum depth of clear working space at electrical equipment rated above 75 kV and classified as Condition 1?**

---

- A) 3 feet
- B) 5 feet
- C) 6 feet
- D) 8 feet

**Answer: D**

*NEC Table 110.34(A) requires 8 feet minimum depth of clear working space under the conditions described in this question.*

# Index

---

## A

Advisory rules .....6  
Air-conditioning  
  branch circuit .....221  
  disconnect .....220  
Aircraft energizers .....239  
Aircraft hangars .....224, 237-238  
Alternate power sources ....243-244  
Aluminum conductors .....106  
Aluminum SE cable .....108  
Ammeter .....190-191, 200-201  
Ampacity .....17, 106-107  
Ampere .....93  
Anchors, electrical equipment .18-19  
ANSI electrical symbols .....284  
Answer sheet .....301, 306, 324  
Appliance  
  horsepower .....172  
  load, calculating .....56  
  nameplate .....174  
  outlets .....87  
  overcurrent protection ....172-173  
  panelboard .....118-120  
  rating .....172  
  utilization equipment .....163  
Arc-fault circuit interrupter ....80,84  
Arc welder .....149  
Architect's scale .....272-274  
Attachment plug .....26  
  configurations .....27  
Automatic control, lighting .....84  
Autotransformer  
  branch circuits .....76  
  fault sensing system .....262  
  motor starter .....216  
  neutral current rating .....151  
  overcurrent protection .150-151,264  
  rating .....262  
Auxiliary gutters .....120  
Auxiliary lighting enclosure ....170  
AWG conductors .....62

## B

Bare conductor .....18  
Baseboard heaters .....287  
Basement, unfinished .....87  
Bathroom

  definition .....33, 77  
  receptacles .....63  
Bend, total equivalent .....65  
Boiler, overcurrent protection ....178  
Bonding jumpers .....15, 232  
Branch circuit  
  calculating .....44, 55-56  
  conductors .....255  
  definition .....59  
  electric-discharge lighting ....252  
  general purpose .....29  
  health care facilities .....242  
  identification .....36  
  load .....132  
  multiwire .....147  
  overcurrent protection .....206  
  panelboard .....119  
  protective device .....144  
  rating .....62  
  sign .....247  
  sizing .....67, 147, 170  
  uses .....62  
Bulk storage plants, fixed wiring .240  
Busbars .....122  
Bushing, insulated .....135  
Busway  
  height .....131  
  overcurrent protection ....154-156  
  rating .....154-156

## C

Cable .....82-83  
Cable strap, SE .....108  
Cable tray systems .....65  
Cablebus, overcurrent  
  protection .....156-157  
Calculations, electrical .....37-58  
Capacitance, calculating .....53  
Capacitive reactance, calculation .53  
Capacitor  
  code requirements .....257-258  
  flammable liquid .....265  
  grounding devices .....259  
  ungrounded conductor ..261, 265  
  voltage .....260  
Capacitor circuit conductors ....260  
Cartridge fuses .....142, 194  
Ceiling fans, weight .....172  
Cell line .....256

Circuit, load .....284  
Circuit breakers  
  adjustable .....29, 32  
  connected in series .....146  
  definition .....19, 137  
  grouped .....110  
  handle position .....139  
  height .....131  
  number allowed .....128  
  operation .....130  
  panelboard .....126  
  setting .....32  
  standard rating .....144  
Class I  
  fixed wiring systems .....238  
  flammable gas .....231  
  motors .....236  
  pendant fixture .....228  
  wiring methods .....236  
Class I, Division 1  
  aircraft hangar .....237  
  conduit seal .....227  
  explosion-proof .....226  
  flammable gas .....231-232  
  paint spray booths .....240-241  
Class I, Division 2  
  aircraft hangar .....237  
  aircraft power plant .....238  
  flexible cords .....233  
  floor level .....235  
  gasoline dispenser .....230  
Class II  
  pendant fixture .....229  
  resistors .....234  
Class II, Division 1  
  dry-type transformer .....233  
  motors .....228  
  paint spray booths .....240-241  
Class III  
  conduit locknut .....235  
  pendant fixture .....229  
Class III, Division 1  
  lighting fixtures .....234  
Class III, Division 2  
  fiber storage .....226  
  lighting fixtures .....234  
Clear working space, equipment .36  
Clearance, conductors  
  480-volt system .....121  
  condition 1 .....126

- condition 2 .....121  
 conductors above pools .....250  
 service conductors .....97-99, 101  
 Cold water pipe, grounding .....115  
 Color code, conductor ...64, 70, 120  
 Combustible material .....17  
 Computer room wiring .245, 249, 253  
 Computer, nameplate .....254  
 Concealed wiring .....14  
**Conductors**  
   aluminum .....106  
   ampacity .....106-107  
   AWG .....62  
   bare .....18  
   clearance ...97-99, 101, 121, 250  
   color .....64, 70  
   copper grounding electrode ...104  
   direct-buried .....61  
   insulated .....19, 64, 208  
   motor .....209-210, 212-214  
   parallel .....80  
   pendant .....166  
   service .....89, 91, 112  
   sign .....248  
   size .....47  
   spacing .....134  
   stranded .....80  
   THHN .....103  
   THW .....61, 102, 106  
   ungrounded .....139  
   water heater .....171  
**Conduit**  
   liquidtight .....207  
   motor conductors .....206  
   size .....281  
   sizing .....84  
   total equivalent bend .....65  
 Conduit bodies .....20  
 Conduit locknut, Class III .....235  
 Conduits, electrical system .....86  
 Continuous loads .....28, 84  
 Controllers, motor .....29, 203  
 Cooking units .....55  
 Copper wire, sizing ...73, 76-78, 96  
 Cord connectors, grounding .....75  
 Cord-connected load .....78  
 Cross-section drawing .....271  
 Current multiplier .....190  
 Current transformers .....109  
 Current, calculating  
   .....40-42, 45-49, 51, 55, 57-58  
**D**  
 Data processing equipment ..253-254  
 Data processing rooms,  
   wiring .....119, 245  
 De-icing equipment .....177-180  
 Demand factor .....30, 73  
 Detail drawing .....271  
 Dielectric heating equipment ...245  
 Dimmer controls .....152  
 Direct buried conductors .....65  
**Disconnect**  
   air-conditioning .....220  
   data-processing room .....119  
   gasoline dispenser .....227  
   motor .....209-210, 218-219  
   motor compressor .....222  
 Disconnecting means, minimum  
   rating .....222  
 Distribution equipment .....127  
**Download**  
   final exam .....340  
   instructions .....340-341  
   Study Center .....340-341  
 Drawings .....269-270  
 Drip loops .....112  
 Dry-type transformer .....267  
 Dual-element time-delay  
   fuses .....142-143  
 Duct heaters, definition .....177  
 Duplex receptacles  
   drawings .....278-279  
   symbol .....276-277  
 Dusttight enclosure .....34  
 Dynamic electricity .....183  
**E**  
 Edison-base fuse .....138, 142  
 Electric calculations .....37-58  
   electric bill .....162-164  
 Electric discharge lighting ...74, 252  
 Electric motors .....203  
 Electric ranges .....78, 153  
 Electric service .....57, 90  
 Electric system, illustrated .....60  
 Electrical drawings .....269-270  
 Electrical equipment  
   access to .....35  
   fittings .....28  
 Electrical faults .....199  
 Electrical specifications .....270  
 Electrical symbols .....276-277  
 Electrical system, conduit size ...86  
 Electrical value, change in .....199  
 Electrician's exams .....5  
 Electricity, definition .....183  
 Electrolytic cells .....246  
 Electrons .....183  
 Electroplating .....154, 246  
 Elevators .....246  
 EMT .....65, 82, 103  
   support .....63  
 Enclosed service disconnect .....111  
**Enclosures**  
   auxiliary lighting equipment ...170  
   dust-ignition proof .....228  
   electrical equipment ...15, 20-21  
   junction boxes .....135  
   lighting fixture .....170  
   motor controller .....206  
**Entrance to equipment** .....16, 22  
**Entrances**  
   equipment room .....35  
   room with live parts .....33  
 Equations .....37-38  
**Equipment**  
   access to .....35  
   clear working space .....36  
   enclosures .....15  
   general use .....7  
   guards .....15  
   hazardous locations .....231  
   headroom .....36  
   lighting near .....86  
   over 600 volts .....22  
   service .....89, 91  
   special .....8  
 Exam — Download .....340-341  
   Interactive Download .....340-341  
   Timed — Download .....341  
   Untimed — Download .....341  
 Explosion-proof .....226  
 Exposed electric parts .....30  
 Externally operable .....16  
**F**  
 Feeder circuit .....282  
 Feeder tap .....147  
 Feeders .....14, 60  
   common neutral .....70  
   identification .....36  
   overcurrent protection .....71  
 Festoon lighting .....34, 74  
 Fill in conduit .....103  
 Fire protection signal circuits ...160  
 Fire rating .....261  
 Fire resistant, definition .....261  
 Fittings, electrical equipment ..28, 31  
 Fixed wiring .....238, 240  
 Fixture ballast, clearance .....167  
 Fixture wires .....166  
 Flammable liquid in capacitor ..265  
 Flammable materials, ignition ..230  
**Flexible cords**  
   aircraft energizer .....239  
   Class I, Division 2 .....233  
   showcase lighting .....167  
 Flexible metal conduit .....232  
 Floor plan .....269  
   lighting .....283  
   receptacle layout ...275, 278-279  
   scale .....280  
 Frame, motor .....219  
 Frequency meter .....189  
**Fuse**  
   branch circuit protected by ...145

cartridge . . . . .143  
connected in parallel . . . . .145  
connected in series . . . . .146  
definition . . . . .137  
dual-element time-delay . . . . .142  
Edison base . . . . .138, 142  
interrupting rating . . . . .147  
nonstandard ampere rating . . . . .138  
plug base . . . . .142  
sizing . . . . .138  
standard rating . . . . .144  
time-delay . . . . .142-143  
window . . . . .139, 199-200  
Fused switch . . . . .110, 132  
Fusible link, definition . . . . .137

**G**

Garage  
adjacent areas . . . . .236  
definition . . . . .223  
floor level . . . . .235  
Garage circuits . . . . .68  
ground-fault circuit interrupter . . . . .237  
spark-producing equipment . . . . .229  
Gasoline dispenser, disconnect . . . . .227  
Gasoline fill-pipe . . . . .230  
General purpose branch circuit . . . . .29  
General regulations . . . . .13  
Ground-fault circuit interrupters  
definition . . . . .30  
garage . . . . .237  
receptacles . . . . .76, 85, 87, 280  
Grounded conductor  
color . . . . .120  
copper . . . . .120  
definition . . . . .95  
disconnect . . . . .111  
overcurrent protection . . . . .159-160  
Grounded neutral system . . . . .115  
Grounding  
metal enclosures . . . . .102, 105  
receptacles . . . . .75-76, 241  
Grounding electrodes . . . . .113-116  
Grounding ring . . . . .115  
Guards for equipment . . . . .15  
Gutters, auxiliary . . . . .120

**H**

Handholes, accessible, in  
light poles . . . . .129  
Hazardous locations  
conduit . . . . .226  
induction heating . . . . .256  
wiring in . . . . .223  
Headroom  
electrical equipment . . . . .36  
minimum . . . . .21  
Health care facilities  
alternate power sources . . . . .243-244

branch circuits . . . . .148, 242  
code requirements . . . . .224-225  
grounding receptacles . . . . .241  
life safety branch circuits . . . . .242  
panelboard . . . . .121, 127, 241  
power sources . . . . .243-244  
receptacles . . . . .242  
Heating cable  
interval . . . . .176  
protection . . . . .181  
wattage . . . . .177  
Heating elements . . . . .153  
How to use the book . . . . .5  
HVAC equipment  
lighting near . . . . .86  
receptacles . . . . .68

**I**

Identification, wiring . . . . .36  
Illumination for service equipment . . . . .16  
Impedance, calculating . . . . .52  
Incandescent lamps . . . . .169, 196  
Independent switches . . . . .201  
Induction heating, hazardous  
locations . . . . .256  
Induction motors . . . . .203  
Inductive reactance . . . . .41, 51  
Infrared heating lampholder . . . . .171, 174  
Instructions — Download . . . . .340-341  
Insulated bushing . . . . .135  
Insulated conductor . . . . .19, 208  
Insulated grounded conductor,  
color . . . . .120  
Integrated electric systems . . . . .246  
Interactive Study Center . . . . .340-341  
Exam mode . . . . .340, 341  
Study mode . . . . .340, 341  
Intrinsically safe circuits . . . . .230  
Iron core transformers . . . . .263  
Isolated, definition . . . . .31  
Isolating switches, hookstick . . . . .131

**J**

Joists, wiring through . . . . .85  
Junction boxes . . . . .135  
minimum length . . . . .123

**K**

Kilowatt-hour meter . . . . .184-186  
Kirchhoff's voltage law . . . . .40  
Knife switches . . . . .122-124

**L**

Lampholders  
conductors . . . . .165

heavy-duty . . . . .61  
infrared heating lamp . . . . .171  
insulation . . . . .170  
rating . . . . .79  
sign . . . . .247  
wattage . . . . .169  
weatherproof . . . . .168  
wiring . . . . .74  
Laundry circuits . . . . .67  
Legend . . . . .276  
Licensing requirements . . . . .5  
Life safety branch circuits . . . . .242  
Light for service equipment . . . . .16  
Light poles, accessible handholes . . . . .129  
Lighting  
electric-discharge . . . . .74  
festoon . . . . .74  
show window . . . . .71  
Lighting circuits . . . . .21  
Lighting fixtures  
as raceway . . . . .167  
Class III, Division 1 and 2 . . . . .234  
dimensions . . . . .164  
enclosures . . . . .170  
marking . . . . .168  
metal pole . . . . .164  
nonmetallic . . . . .168  
number required . . . . .45  
weight . . . . .164  
Lighting floor plan . . . . .283, 285  
Lighting load . . . . .41-42, 55-56, 97, 105  
Lighting panelboard . . . . .118-120  
Liquidtight conduit . . . . .207  
Live parts, protection from . . . . .17, 219  
Load center, testing . . . . .197  
Locked-rotor current . . . . .210  
Low voltage  
overcurrent protection . . . . .157-158  
problems . . . . .192-194

**M**

Machines  
irrigation . . . . .246  
metalworking . . . . .245  
nonportable . . . . .245  
Made electrode . . . . .113  
Main service disconnect . . . . .127  
Mandatory rules . . . . .6  
Manufactured wiring systems . . . . .246  
Math operations needed . . . . .37  
Meggers . . . . .198  
Metal enclosures, grounding  
. . . . .102, 105, 118  
Metal housing for equipment . . . . .20-21  
Miscellaneous applications . . . . .245-246  
Mobile home service . . . . .106  
Motor  
disconnect means  
. . . . .204-205, 208-209, 214, 217-220

- enclosed .....227  
live parts .....206  
operating temperatures .....227  
overcurrent protection  
.....204-205, 211-212, 214, 218  
overload protection .....205  
phase converters .....212
- Motor circuits  
bushing .....212  
overcurrent protection .....218
- Motor compressor  
ampacity .....221  
disconnect .....222  
hermetic refrigerant .....220  
overload protection .....222  
rating .....221-222  
sizing .....220
- Motor conductors  
conduit .....206  
rating .....209-210, 212-214
- Motor control  
center .....34-35  
circuit devices .....211, 212
- Motor controller  
code requirements .....203-204  
conductors .....216  
definition .....215  
enclosures .....206, 219  
grounding .....217  
motors connected .....217
- Motor frame, ungrounded .....219
- Motor-starter  
autotransformer .....215-216  
rheostats .....216
- Multiple-occupancy building .....110
- N**
- Nameplate  
appliance .....174  
computer .....254  
space heating .....176
- National Electrical Code* .....6-9
- National Fire Protection  
Association (NFPA) .....13, 24
- NEC* grounding requirements .....116
- Neutral conductors .....93, 109, 115
- Nonheating leads .....179-180
- Nonlinear load .....35
- O**
- Office furnishings .....246
- Ohm's law .....40
- Ohmmeter .....188, 196
- Open circuit .....196, 199
- Open current voltage .....248
- Outdoor electrical fencing .....33
- Outdoor receptacles .....87
- Outlets  
definition .....24
- lighting .....69  
temporary .....79
- Outline lighting .....31, 245
- Ovens, connections .....171
- Overcurrent protection  
appliance .....172-173  
autotransformer .....150-151  
boiler .....178  
branch circuit .....206  
cablebus system .....157-158  
de-icing equipment .....178  
definition .....137  
electric range .....153  
electroplating systems .....154  
grounded conductors .....159-160  
infrared heating lamp .....174  
location .....141  
low-voltage system .....157-158  
motor .....204-205, 211-212, 214, 218  
panelboard .....120, 122, 127  
rating .....146, 255  
sizing .....71, 81  
space heating .....175-176  
stage lighting .....152  
supplementary .....145  
transformer .....261, 264, 266  
ungrounded conductors .....139  
welders .....149  
X-ray equipment .....149
- Overcurrent trip unit .....145
- Overhead wiring .....73
- Overloads .....32
- P**
- Paint spray booths .....240-241
- Panelboard  
bare metal parts .....133-135  
branch circuit .....119  
breakers .....121  
busbars .....122  
cabinets .....124  
circuit breakers .....126, 127-129  
enclosures .....124  
health care facilities .....121, 127, 241  
lighting and appliance .....118-120  
metal .....136  
overcurrent devices .....122, 127-129  
rating .....121  
schedule .....125-126, 281  
sizing .....118  
spacing .....133  
terminal bar .....119  
wire terminals .....115
- Panels, switchboard .....122
- Paralleled conductors .....80
- Partitions for equipment .....22
- Pendant conductors .....166
- Pendant fixtures .....228-229
- Phase converters .....212-214, 222
- Phase-to-phase voltage .....109
- Pipe organs .....246, 254
- Plan view .....271
- Plenums .....23
- Plot plan, definition .....269
- Plug base fuse .....142
- Plug configurations .....27
- Plug fuses .....142, 161, 199-200
- Plug-connected load .....78
- Power circuits .....21
- Power factor .....52, 188
- Power source, health care .....243-244
- Power supply, RV .....159
- Power-riser diagram .....269-270, 281
- Preparing for exam .....9
- Pressure connectors .....28, 112
- Primary fuses, transformer .....259
- Program — Study Center Download  
.....340-341
- Protection, outdoor electrical .....33
- Q**
- Qualified person, definition .....23
- R**
- Raceways .....22, 25
- Radiation-pyrometer .....190
- Rainproof components .....23
- Raintight connectors .....24
- Ranges, electric .....72
- Reactive power, calculating .....52
- Receptacles  
bathrooms .....63  
definition .....22  
different voltages .....78  
distance from equipment .....68  
GFCI protection .....85  
grounding .....75-76  
health care facilities .....242  
hotels .....63  
isolated ground .....169  
layout .....275  
markings .....166  
outdoor .....87  
rating .....78  
requirements .....67-68  
wall-switch controlled .....64
- Recreational vehicle, power  
supply .....159
- Remote control, lighting .....84
- Remote-controlled circuits .....26
- Resistance  
circuit .....50, 53-54  
motor .....48  
oven .....43  
thermometer .....190  
THWN conductors .....49  
welder .....149
- Resistor, installation .....265



Rheostat, motor-starter . . . . .216  
Rigid steel conduit  
  clearance . . . . .104  
  sizing . . . . .102, 106  
  supports . . . . .107  
Rotary phase converters . . . . .212  
Rotor . . . . .203

**S**

Safety switches . . . . .131-132  
Schedules . . . . .125-126, 270  
Schematic . . . . .270  
SE cable . . . . .108  
Section drawing . . . . .271  
Service conductors,  
  clearance . . . . .97-99, 101  
Service disconnect  
  enclosures . . . . .105, 111  
  location . . . . .104-105  
  main . . . . .117  
  number . . . . .97  
  two-circuit . . . . .111  
Service drop . . . . .89, 91, 99-100  
Service entrance . . . . .14, 80  
  cable, support . . . . .100-101, 108  
  conductors  
    . . . . .89, 91, 94-96, 102-104, 112  
  conduit . . . . .102, 104, 106-107  
  EMT . . . . .103  
  equipment . . . . .89, 91, 117  
  grounding . . . . .113-115  
  grounding conductor . . . . .109  
  metering . . . . .109  
  sizing . . . . .102, 108  
Service equipment  
  enclosures . . . . .102  
  mobile home . . . . .106  
Service heads . . . . .100-101, 112  
Service lateral . . . . .89, 92  
Set-screw, wires under . . . . .129  
Short circuit  
  definition . . . . .197  
  electrical fault . . . . .199  
Signaling circuit . . . . .26  
Signs  
  branch circuit . . . . .247  
  clearance from wood . . . . .247  
  code requirements . . . . .245  
  conductors . . . . .248  
  neon . . . . .248  
  portable . . . . .247-248  
  transformers . . . . .247  
Silicon sealant . . . . .248  
Single-line drawings . . . . .270  
Site plan . . . . .271  
Small appliance circuits . . . . .105  
Snap switches . . . . .132, 205  
Snow-melting equipment . . .178-180  
Solar photovoltaic systems . . . . .246

Sound-recording equipment . . . . .246  
Space for bending wire . . . .123, 130  
Space heating . . . . .72, 175-176  
Special conditions . . . . .9  
Special equipment . . . . .8  
Special occupancies . . . . .7, 223-225  
Specifications . . . . .270  
Stage lights . . . . .152  
Standard voltages . . . . .71  
Static electricity . . . . .183  
Static phase converters . . . . .212  
Stator . . . . .203  
Steel plates . . . . .85  
Stranded conductors . . . . .80  
Study Center Download . . . .340-341  
  Exam mode . . . . .340, 341  
  Study mode . . . . .340, 341  
Studying for exam . . . . .9  
Supplementary overcurrent  
  devices . . . . .145  
Surge arresters . . . . .212, 232  
Surge current . . . . .212  
Swimming pool wiring . . .246, 249-251  
Switch-controlled lighting . . . . .86  
Switchboard  
  definition . . . . .25  
  live parts, exposed . . . . .17  
  panels . . . . .122  
  voltage . . . . .118  
Switches  
  fused . . . . .110  
  knife . . . . .122-124  
  operation . . . . .130  
  snap . . . . .132, 205  
Symbol list . . . . .277  
Synchroscope . . . . .189

**T**

Tachometer . . . . .189, 196  
Tap conductor, ampacity . . . . .141  
Taps, transformer . . . . .263  
Temporary wiring . . . . .79  
Terminal bar, panelboard . . . . .119  
Test — Study Center . . . . .340-341  
  Print results . . . . .341  
Theaters, code requirements . . . . .224  
Thermal barrier . . . . .265  
Thermocouple thermometer . . . . .190  
Thermostat . . . . .287-289  
THHN conductors . . . . .103  
Thickness, steel plates . . . . .85  
THW conductors . . . . .61, 102, 106  
Time-delay fuse . . . . .142-143  
Title block . . . . .275, 286-289  
Transformer vault . . . . .266-268  
Transformer-type rectifier . . . . .254  
Transformers . . . . .266-268  
  code requirements . . . . .257  
  dry-type . . . . .233, 259-261

  fuse rating . . . . .264  
  iron core . . . . .263  
  parts . . . . .262  
  primary fuses . . . . .259  
  size . . . . .43  
  taps . . . . .263  
Trolley wires . . . . .21  
Type AC cable . . . . .82  
Type MC cable . . . . .83  
Type MI cable . . . . .82, 234  
Type NMC cable . . . . .83  
Type TC cable . . . . .83

**U**

Unfinished basement, definition . . .87  
Utilization equipment . . . . .163-181

**V**

Vault, transformer installed in . . .259  
Volt-ampere capacity, calculating . .45  
Volt-ampere to watt ratio . . . . .195  
Voltage  
  calculating . . . . .41-42, 46, 50-51  
  reading, normal . . . . .191-192  
  standard . . . . .71  
  test . . . . .192  
Voltage drop, calculating .44-45, 50-51  
Voltmeter . . . . .191, 194-196

**W**

Wall switch, location . . . . .69  
Water heater conductors . . . . .171  
Water pipe, as ground . . . . .113-116  
Watt-hour meter . . . . .109, 184-186  
Wattage . . . . .43, 46-47, 56  
Wattmeter . . . . .187  
Welding equipment, wiring . . . .246  
Wet-niche fixture . . . . .251  
Wheatstone bridge . . . . .188  
Wire bending space . . . . .123, 130  
Wire terminals, panelboards . . . .115  
Wiring  
  design and protection . . . . .6  
  overhead . . . . .73  
  temporary . . . . .79  
Wiring gutters, panelboard . . . . .123  
Wiring methods and materials . . . .6  
Wood studs, drilling . . . . .64  
Working space at equipment  
  . . . . .17, 36, 149, 246, 254-255

# Practical References for Builders

---

## Contractor's Guide to QuickBooks 2012

*QuickBooks* 2012 has many new features that simplify a building contractor's bookkeeping work. You'll wonder how you managed without them. To help you make the most of these new features, or to make getting set up with *QuickBooks* almost painless, this user-friendly manual walks you through *QuickBooks*' detailed setup procedure and explains step-by-step how to create a first-rate accounting system. You'll learn in days, rather than weeks, how to use *QuickBooks* to get your contracting business organized, with simple, fast accounting procedures. But setting up *QuickBooks* from scratch can be time-consuming. On the free download included with purchase of the book you'll find a *QuickBooks* file preconfigured for a construction company. Open it, enter your company's data, add info on your suppliers, subs and customers, and you're up and running. The setup's done for you. **288 pages, 8½ x 11, \$58.50**

**See checklist for other available editions.**

**Also available as an eBook (PDF), \$29.25 at [www.craftsman-book.com](http://www.craftsman-book.com)**  
**eBooks also available for 2007, 2008, 2009 and 2010.**

---

## Electrical Blueprint Reading Revised

Shows how to read and interpret electrical drawings, wiring diagrams, and specifications for constructing electrical systems. Shows how a typical lighting and power layout would appear on a plan, and explains what to do to execute the plan. Describes how to use a panelboard or heating schedule, and includes typical electrical specifications.

**208 pages, 8½ x 11, \$29.75**

**Also available as an eBook (PDF), \$14.88 at [www.craftsman-book.com](http://www.craftsman-book.com)**

---

## Electrician's Exam Study Guide

Here you'll find 1,500 exam-style multiple-choice and true/false questions and answers to help you pass the electrician's exam on the first try. Includes references to the NEC with plenty of illustrations to help you gain insight on the many mysteries of the Code. Filled with extensive tables and examples, this career-boosting guide presents a wealth of information on general definitions and requirements for installations, wiring methods, equipment, product safety standards, administration, enforcement, and much more. **370 pages, 8½ x 11, \$39.95**

---

## National Electrical Estimator

This year's prices for installation of all common electrical work: conduit, wire, boxes, fixtures, switches, outlets, loadcenters, panelboards, raceway, duct, signal systems, and more. Provides material costs, manhours per unit, and total installed cost. Explains what you should know to estimate each part of an electrical system. Includes a free download of an electronic version of the book with *National Estimator*, a stand-alone *Windows*™ estimating program. An interactive multimedia video that shows how to use the software to compile electrical cost estimates is free at [www.costbook.com](http://www.costbook.com).

**552 pages, 8½ x 11, \$72.75. Revised annually**

**Also available as an eBook (PDF), \$36.37 at [www.craftsman-book.com](http://www.craftsman-book.com)**

---

## Commercial Electrical Wiring

Make the transition from residential to commercial electrical work. Here are wiring methods, spec reading tips, load calculations and everything you need for making the transition to commercial work: commercial construction documents, load calculations, electric services, transformers, overcurrent protection, wiring methods, raceway, boxes and fittings, wiring devices, conductors, electric motors, relays and motor controllers, special occupancies, and safety requirements. This book is written to help any electrician break into the lucrative field of commercial electrical work. Based on the 1999 NEC. **320 pages, 8½ x 11, \$36.50**

---

## Home Building Mistakes & Fixes

This is an encyclopedia of practical fixes for real-world home building and repair problems. There's never an end to "surprises" when you're in the business of building and fixing homes, yet there's little published on how to deal with construction that went wrong — where out-of-square or non-standard or jerry-rigged turns what should be a simple job into a nightmare. This manual describes jaw-dropping building mistakes that actually occurred, from disastrous misunderstandings over property lines, through basement floors leveled with an out-of-level instrument, to a house collapse when a siding crew removed the old siding. You'll learn the pitfalls the painless way, and real-world working solutions for the problems every contractor finds in a home building or repair jobsite. Includes dozens of those "surprises" and the author's step-by-step, clearly illustrated tips, tricks and workarounds for dealing with them. **384 pages, 8½ x 11, \$52.50**

**Also available as an eBook (PDF), \$26.25 at [www.craftsman-book.com](http://www.craftsman-book.com)**

---

## Estimating Electrical Construction, Revised

Estimating the cost of electrical work can be a very detailed and exacting discipline. It takes specialized skills and knowledge to create reliable estimates for electrical work. See how an expert estimates materials and labor for residential and commercial electrical construction. Learn how to use labor units, the plan take-off, and the bid summary to make an accurate estimate, how to deal with suppliers, use pricing sheets, and modify labor units. This book provides extensive labor unit tables and blank forms on a CD for estimating your next electrical job. **272 pages, 8½ x 11, \$59.00**

---

## Construction Contract Writer

Relying on a "one-size-fits-all" boilerplate construction contract to fit your jobs can be dangerous — almost as dangerous as a handshake agreement. Construction Contract Writer lets you draft a contract in minutes that precisely fits your needs and the particular job, and meets both state and federal requirements. You just answer a series of questions — like an interview — to construct a legal contract for each project you take on. Anticipate where disputes could arise and settle them in the contract before they happen. Include the warranty protection you intend, the payment schedule, and create subcontracts from the prime contract by just clicking a box. Includes a feedback button to an attorney on the Craftsman staff to help should you get stumped — No extra charge. **\$149.95.** Download the Construction Contract Writer at: <http://www.constructioncontractwriter.com>

---

## Electrical Blueprint Symbols Quick-Card

This NEW updated 4-page, laminated guide provides the essential electrical symbols used in architectural plans and engineering drawings. A must-have for every electrical contractor. Includes symbols for electrical outlets and fixtures, switches, wiring and conduit, communications, audio-video and data/computer cabling, exterior lines, lighting, etc. and hundreds of abbreviations used in plans and drawings related to electrical. Symbols are shown for plan view, and where alternatives are commonly in use, multiple symbols are shown. Typical notation formats are also included. **4 pages, 8½ x 11, \$7.95**

---

## CD Estimator

If your computer has *Windows*™ and a CD-ROM drive, CD Estimator puts at your fingertips over 150,000 construction costs for new construction, remodeling, renovation & insurance repair, home improvement, framing & finish carpentry, electrical, concrete & masonry, painting, earthwork & heavy equipment and plumbing & HVAC. Monthly cost updates are available at no charge on the Internet. You'll also have the *National Estimator* program — a stand-alone estimating program for *Windows*™ that *Remodeling* magazine called a "computer wiz," and *Job Cost Wizard*, a program that lets you export your estimates to QuickBooks Pro for actual job costing. A 60-minute interactive video teaches you how to use this CD-ROM to estimate construction costs. And to top it off, to help you create professional-looking estimates, the disk includes over 40 construction estimating and bidding forms in a format that's perfect for nearly any *Windows*™ word processing or spreadsheet program.

**CD Estimator is \$108.50**

---

## Code Check Electrical 6th Edition

This 6th edition of Code Check Electrical has been completely updated to the 2011 *National Electrical Code* and the 2009 *International Residential Code*. Spiral bound, a flip chart with durable, laminated pages, this reliable resource clearly details how to avoid the most common electrical violations, while stressing the central safety principles behind the 2011 *National Electrical Code*. This edition covers every type of residential electrical system, offering the most up-to-date information on grounding, bonding, service panels, branch circuits, GFCIs and AFCIs, switches, receptacles, and so much more. Over a hundred tables and figures make this the on-the-job choice for electricians, contractors, and inspectors.

**30 pages, 8½ x 11, \$19.95**

**Also available: Code Check Electrical 5th Edition,** which is based on the 2008 NEC and the 2006 IRC, **\$18.95**

---

## ElectriCalc Pro Calculator

This unique calculator, based on the 2002 *National Electrical Code* and updateable to future *NEC* codes, solves electrical problems in seconds: Calculates wire sizes, gives you integrated voltage drop solutions, conduit sizing for 12 types of conduit, and finds motor full-load amps per the current *NEC*. Also offers one-button parallel and de-rated wire sizing, computes fuse and breaker sizes, sizes overload protection, calculates service and equipment grounding conductor sizes, finds NEMA starter sizes, works in volts, volt-amps, watts, kVA, kW, PF%, and DC resistance, and even operates as a math calculator. **3½ x 7, \$99.95**

## Residential Wiring to the 2008 NEC

This completely revised manual explains in simple terms how to install rough and finish wiring in new construction, alterations, and additions. It takes you from basic electrical theory to current wiring methods that comply with the 2008 *National Electrical Code*. You'll find complete instructions on troubleshooting and repairs of existing wiring, and how to extend service into additions and remodels. Hundreds of drawings and photos show you the tools and gauges you need, and how to plan and install the wiring. Includes demand factors, circuit loads, the formulas you need, and over 20 pages of the most-needed 2008 *NEC* tables to help your wiring pass inspection the first time. Includes a CD-ROM with an Interactive Study Center that helps you retain what you've learned, and study for the electrician's exam. Also on the CD is the entire book in PDF format, with easy search features so you can quickly find answers to your residential wiring questions. **304 pages, 8½ x 11, \$42.00**

**Residential Wiring to the 2011 NEC available as an eBook (PDF), 304 pages, \$21.00 at [www.craftsman-book.com](http://www.craftsman-book.com)**

## 2011 National Electrical Code

This new electrical code incorporates sweeping improvements to make the code more functional and user-friendly. Here you'll find the essential foundation for electrical code requirements for the 21st century. With hundreds of significant and widespread changes, this 2011+ *NEC* contains all the latest electrical technologies, recently developed techniques, and enhanced safety standards for electrical work. This is the standard all electricians are required to know, even if it hasn't yet been adopted by their local or state jurisdictions. **880 pages, 8½ x 11, \$85.00**

**Also available: 2008 National Electrical Code, \$75.00**

## 2011 Ugly's Electrical Reference



The most popular pocket-sized electrical book in America. Ugly's is used by electricians, engineers, designers and maintenance workers, instructors and the military. This unique book explains bending conduit, *National Electrical Code* tables, wiring configurations, complex electrical formulas, and much more. This 2011 edition contains all the electrical material that has made this reference famous, but also reflects 2011 *NEC* changes and new color-coded wiring diagrams. Also includes updated coverage of Alternative Energy, Combination Circuits, Conductor Properties, Conduit Bending, Conversion Tables, Insulation Charts, Metric System, Ohm's Law, and a General First Aid Section. **198 pages, 4 x 6, \$18.95**

## National Construction Estimator

Current building costs for residential, commercial, and industrial construction. Estimated prices for every common building material. Provides man-hours, recommended crew, and gives the labor cost for installation. Includes a free download of an electronic version of the book with *National Estimator*, a stand-alone *Windows™* estimating program. An interactive multimedia video that shows how to use the software to compile construction cost estimates is free at [www.costbook.com](http://www.costbook.com).



**672 pages, 8½ x 11, \$72.50. Revised annually**  
**Also available as an eBook (PDF), \$36.25 at [www.craftsman-book.com](http://www.craftsman-book.com)**

**Download all of Craftsman's most popular costbooks  
for one low price with the Craftsman Site License.  
<http://www.craftsmansitelicense.com>**



**Craftsman Book Company**  
6058 Corte del Cedro  
Carlsbad, CA 92011

Call us.

**1-800-829-8123**  
Fax (760) 438-0398

### 10-Day Money Back Guarantee / Prices subject to change without notice

Name \_\_\_\_\_

e-mail address (for order tracking and special offers) \_\_\_\_\_

Company \_\_\_\_\_

Address \_\_\_\_\_

City/State/Zip \_\_\_\_\_  This is a residence

Total enclosed \_\_\_\_\_ (In California add 7.50% tax)

*Free Media Mail shipping, within the US,  
when your check covers your order in full.*

### In A Hurry?

We accept phone orders charged to your

Visa,  MasterCard,  Discover or  American Express

Card# \_\_\_\_\_

Exp. date \_\_\_\_\_ Initials \_\_\_\_\_

**Tax Deductible:** Treasury regulations make these references tax deductible when used in your work. Save the canceled check or charge card statement as your receipt.

**Order online** [www.craftsman-book.com](http://www.craftsman-book.com)  
**Free on the Internet!** Download any of Craftsman's estimating database for a 30-day free trial! [www.craftsman-book.com/downloads](http://www.craftsman-book.com/downloads)

- 108.50 CD Estimator
- 19.95 Code Check Electrical 6th Edition
- 18.95 Code Check Electrical 5th Edition
- 36.50 Commercial Electrical Wiring
- 58.50 Contractor's Guide to *QuickBooks* 2012
- 57.00 Contractor's Guide to *QuickBooks Pro* 2010
- 56.50 Contractor's Guide to *QuickBooks Pro* 2009
- 54.75 Contractor's Guide to *QuickBooks Pro* 2008
- 53.00 Contractor's Guide to *QuickBooks Pro* 2007
- 29.75 Electrical Blueprint Reading Revised
- 7.95 Electrical Blueprint Symbols Quick-Card
- 99.95 ElectriCalc Pro Calculator
- 39.95 Electrician's Exam Study Guide
- 59.00 Estimating Electrical Construction
- 52.50 Home Building Mistakes & Fixes
- 72.50 National Construction Estimator w/FREE *Natl Estimator* Download
- 85.00 2011 *National Electrical Code*
- 75.00 2008 *National Electrical Code*
- 72.75 National Electrical Estimator w/FREE *Natl Estimator* Download
- 42.00 Residential Wiring to the 2008 *NEC*
- 18.95 2011 Ugly's Electrical Reference
- 59.50 Electrician's Exam Preparation Guide to the 2014 *NEC*
- FREE Full Color Catalog